



RockvilleArtLeague.org Vol. XXXV No. 2 October 2025

Message from the President, Patrick Sieg

Dear esteemed artists and art lovers...the members of the Rockville Art League,

Thank you to the many members that have already renewed their memberships this year. Without your renewals, we could not do the things that make us proud, including hosting two juried shows and two theme shows each year, supporting the local art community, granting scholarships to several Montgomery College art students each year and inviting speakers to our group at least six times per year.

If you haven't renewed your membership please do soon, we need you, your support and your artistry.

In the last two weeks I have forwarded to each member in good standing (those who have renewed) their personal submission link and personal password. You will use this link and password to enter RAL sponsored shows once these shows are announced and are open for submissions. You will use this link and password through the end of this membership year, August 31, 2026, so please keep it readily accessible for future reference.

I will send you your link as you renew and thank you.

We kicked off the RAL year as we have for the previous eight years with an informative and enjoyable presentation by Dr. Irina Stotland. We are so lucky that she is willing to share her expertise with RAL and keep this tradition going.

Her topic this year was Romanticism and we viewed art by Goya, Gericault, Delacroix, Turner and Constable.

I admit knowing little about this movement (I can claim that about lots of things) and I had thought that the movement was about love, goodness and light.

Wow, I was so wrong.

Romanticism was an artistic, literary, and philosophical movement in the late 18th and early 19th centuries that emphasized emotion, individualism, and the glorification of nature as a reaction against the Enlightenment's focus on reason and logic. It championed the individual's subjective experience, emotion and imagination over intellectual thought.

And sometimes the images were horrifying...making them so much fun to view especially when explained by Dr. Stotland.

The work of the Romantic movement paved the way for Realism, Impressionism and the many schools of abstract art.

I learn so much every time she speaks with our group.

Her presentation was “sublime.”

We have speakers identified for October and November and I am looking forward to their presentations.

- In October we will welcome artist and educator Steve Loya. He has such a unique perspective and creativity that amazes me. He will show us how he takes unique color splotches and with a few carefully applied lines and shapes, turns them into whimsical imaginary beings. He calls them “splotch monsters.”
- In November artist Gonzalo Ruis Navarro will offer a talk and demonstration to our group. Many will remember his well-received presentation to us before the pandemic. We are happy to welcome him back.

Finally, it is the right time to begin thinking about the *Rockville Art League Juried Members' Winter Show*. Our juried shows are much anticipated, and the final exhibits are absolutely beautiful.

- Gonzalo Ruis Navarro will be back to judge our show. He judged a show for us in 2017 and his choices then were thoughtful and the show was beautiful. We look forward to seeing his selections this year.
- The art submission dates are from October 1 to November 1
- All details are provided later in our newsletter and please read them carefully.

Thank you in advance for participating.

Finally, there is a beautiful show on display at Glenview Mansion this month with work from a group of talented artist members of the Han-Mee Association of Greater Washington. These artists are of Korean heritage, and they have a unique perspective and see beauty in many interesting ways. Their work is a blend of abstract, representational and incorporate eastern style and sensibility. The show is on display until October 3 and please make time to see their work.

“Creativity is inventing, experimenting, growing, taking risks, breaking rules, making mistakes, and having fun.”

— Mary Lou Cook

Thank you, Rockville Art League artists, for your creativity, for sharing your artwork and for making our league strong.

Sincerely,

Patrick Sieg

President, The Rockville Art League.

Rockville Art League Speaker Series

We offer six presentations a year – September, October, November, February, March and April. The presentations this year are **on Zoom** with the invitations sent out a few days prior and also posted on the website. Please try to join us *in real time*! The speakers appreciate an audience and plan to allow time for Q&A.

As long as the speaker agrees, the zoom session will be recorded and sent out to members afterwards. Most links to the videos are available on the Rockville Art League's YouTube which you can access by going to the RAL website and clicking the icon for YouTube at the bottom of the page.

Thursday, September 4, 7:00 PM on Zoom: Art Historian Dr. Irina Stotland on *Romanticism and the Fall of Reason*

Thank you to everyone who joined in on the zoom on [Thursday](#) evening for our first meeting of the year. A BIG THANK YOU to Dr. Irina Stotland for a fascinating presentation that had us at times spellbound by the material.

This presentation covered the work of five of the most important painters of Romanticism, the movement that emerged during the late 18th century, Francisco Goya, Eugene Delacroix ("Liberty Leading the People"), J.M.W. Turner, John Constable ("The Hay Wain" and check out his practice of "skying"), and Theodore Gericault ("The Raft of the Medusa"). A novel reverence for nature, the supernatural and a fascination with the exotic and the mysterious (often nightmarish) transformed painting. The emphasis on imagination, emotion and individualism continues to resonate with contemporary artists and audiences today making it an enduring and influential art movement in western art.

If you missed the presentation, please check your inbox for the recording. It can also be found on RAL's YouTube.



Thursday, October 9, 7:00 PM on Zoom: Abstract Artist and Educator Steve Loya on *Splotch Monster Art Basics 101*

We are delighted and honored to have Steve Loya present *Splotch Monster Art Basics 101* to the Rockville Art League. A creative artist and active member of the DMV art community, many members

may already be familiar with him; he also judged the beautiful RAL *Sunflowers* Show in summer 2022 and his late wife Kris Loya judged the RAL Juried Members' Winter Show 2019.

Overview of the presentation: Local artist and educator Steve Loya will demonstrate how he creates something he calls Splotch Monsters - imaginary creatures made from watercolor splotches. He'll show viewers some of his techniques using watercolor paints and various drawing materials to bring his colorful beasts to life, as well as discuss some of the inspiration and ideas that inspire his work. Feel free to join in on the fun or simply tune in and watch!



Bio: Steve Loya is an artist and art educator who has been making and teaching art in northern Virginia for the past 25 years. His work has been exhibited both locally and globally, and he has taught a variety of art-related workshops in the area for both kids and adults alike. His websites include: <https://www.steveloya.com>, and <https://www.splotchmonsterisland.com>, and when he's not making art, you can usually find him taking a walk along a trail in the woods.

Thursday, November 13, 7:00 PM: Fine Artist and Instructor Gonzalo Ruiz Navarro

RAL Juried Members' Winter Show

December 7, 2025 – January 16, 2026

Glenview Mansion Art Gallery

Call for entries: OCTOBER 1 – NOVEMBER 1. *Online submissions only.*

Judge: We are honored that Gonzalo Ruiz Navarro will judge our Juried Members' Winter Show.

Gonzalo Ruiz Navarro is a representational painter based in the Washington, D.C. area, specializing in oils, soft pastels, and drawing. With a Master's in Fine Arts from the University of Valencia and further studies in drawing and painting at various prestigious institutions in Spain, Gonzalo's work is deeply rooted in traditional techniques, which serve as the foundation for his expressive and spontaneous approach to painting. His vibrant work, influenced by the Spanish Impressionist Joaquín Sorolla, is characterized by bold strokes, dynamic gestures, and a passion for capturing the effects of light and color.

Gonzalo's paintings explore themes of landscapes, portraits, and still life, with an emphasis on the emotional power of color and movement. His expressive brushwork and use of vibrant colors infuse his work with energy and life, creating compositions that are both visually engaging and full of atmosphere.

He has exhibited widely, including solo exhibitions in Spain, the U.S., and Pakistan, where his work is part of the permanent collection at the Pakistan National Council for the Arts. Gonzalo's accolades include multiple awards in international competitions, and his work has been featured in "The New York Times" as well as various newspapers and TV channels in Pakistan.

With over 29 years of experience teaching at high school and art school levels, as well as internationally through workshops, Gonzalo brings a student-centered approach to his teaching. He emphasizes the importance of technical proficiency, particularly in drawing, color theory, and composition, while encouraging students to develop their personal artistic voice.

On Exhibit: This juried show will be on display in person **December 7 through January 16** at Glenview Mansion Art Gallery (603 Edmonston Dr./Rockville) with the virtual show available on our website. Prizes awarded on **Sunday, Dec. 7, 2:00pm at Glenview.**

Please read all the information below carefully.

Call Deadline: *Members in good standing* may submit up to **two (2) pieces** of work to be considered by the judge for inclusion in this show **beginning October 1** through **Saturday, November 1**. No submissions will be accepted after the deadline.

- This is NOT a themed show. We have 2 large, juried member shows a year, one in winter and one in spring. You may enter up to 2 pieces of your best work that have not been accepted in a RAL Juried Members' Show to be considered for inclusion.

If your work is accepted into this show, you will be informed **by Monday, Nov. 10** with delivery of artwork on **Tuesday, Dec. 2**. Please note that the amount of time to frame your work is brief, especially with the Thanksgiving holiday.

Entry Fee: A flat \$10 show fee will be collected **from artists that have their work accepted into this show** (not per piece).

IMPORTANT! By submitting work into this show, *you are agreeing to the terms* of the **Show Agreement** listed **here:**

“I agree to the rules of the show as presented in this show call and the schedule below, that my entries are my original works and have not been accepted into a previous **Rockville Art League Juried Members’ Show**. I will not hold the Rockville Art League (RAL), Glenview Mansion, or the City of Rockville responsible for any possible loss or damage to my entries. As with any show, I understand that all reasonable care will be taken in the handling of my artwork. I give RAL, Glenview Mansion, and the City of Rockville permission to use images of my artwork and publish them as appropriate. I acknowledge a commitment to donate 20% of the sale price of my work, if sold during this show at Glenview to the City of Rockville.”

Eligibility and rules: The following rules apply for all works entered.

- Each *member in good standing* may enter *up to two (2) pieces by the deadline*.
- **How to enter:** **submit your entries using your PERSONAL LINK and PASSWORD** that has been or will be emailed to you *by the end of September*. Entries of *up to 2 pieces per artist for consideration* by the judge may be submitted by **Saturday, November 1**.
- **For each submission:** you will be required to include: the **title, medium, dimensions** (note: depth is for sculpture only!), and **market price** (NOT wholesale price!) (If the piece is Not for Sale, please leave blank and you will be contacted to confirm this) and **submit an image** (jpeg or jpg.) of your piece. The mat or the frame (or glass, glare, wall, furniture, etc.) should NOT be visible in the image you submit. Just the artwork itself.
- **If your work is accepted into this show:** a \$10 show fee per artist (not per piece) will be collected at that time.
- RAL retains the right to determine suitability of work for entry in this show.

Artwork requirements: If your work is accepted into this show, *each 2-D piece must be ready for hanging*, gallery-wrapped or framed or professionally finished, **securely wired** by Tuesday, Dec. 2.

- The maximum measurement of any framed side is **48 inches**.
- Only **original works** **framed securely with hanging wire** are acceptable. (NO sawtooth hangers or such.) If submitting unframed canvas, edges should be painted or finished.
- **NO WET PAINT** is allowed.
- The **entries may NOT have been exhibited** previously in a **RAL Juried Members’ Show**.
- All artists are encouraged to sign their work on either the front or back.
- Entries not meeting the show conditions will not be accepted.
- All work must remain up until the end of the show.
- **Sales:** If any work sells while on display at Glenview, the artist agrees to donate 20% of the sales price to the City of Rockville as specified in the **Show Agreement** above.

Categories of Artwork Include:

- Oils and acrylics
- Watercolors
- Pastels, drawings, and hand-pulled prints
- Mixed media, collage, experimental, and original computer-generated art
- Photographs
- Sculpture and ceramics

Awards:

- Best in Show (cash prize)
- First, Second, Third in all categories (cash prizes)
- Honorable Mention at Judge’s Discretion

Schedule:

- **October 1 - November 1** - you may enter **up to two (2) pieces for consideration** online using the link that will be sent to you by the end of Sept. Up to two (2) pieces per artist.
- **Saturday, November 1** – **Deadline for submissions**

- **Monday, November 10** – notification of acceptances sent out to all members by this date. A show fee of \$10 (per artist) will be collected from those whose work is accepted into the show at that time.
- **TUESDAY, Dec. 2**– *delivery of accepted artwork* at Glenview, **10:00am-1:00pm**; if your work is accepted into this show, you or your designee must deliver your work during this time. The judge will award prizes based on an in-person view that afternoon.
- **Sunday, December 7**, 1:30-3:30pm, *Meet the Artists Opening* at Glenview Mansion. The judge will **award prizes at 2:00pm** with remarks about the work. He will also be available during the afternoon to talk with artists.
- **The week of December 8**: A zoom video of the judge discussing his awards choices will be sent out to all members once it is ready.
- **TUESDAY, January 20** - **pick up artwork** 10:00am-1:00pm. You or your designee must pick up your work on this date.

Please note: *Members in good standing** will have their personal link and password emailed to them by the LAST WEEK of September. **PLEASE SAVE IT.** It will be the same one you use to enter all RAL shows this year.

**If you paid your dues for Sept. 1, 2025 – Aug. 31, 2026, you are a member in good standing.*
PLEASE: *if you are unsure of your membership status, ask us!*

You will use your personal link/password that has or will be sent to you at the end of September to enter your work in the show. **Entries accepted October 1 – November 1.** Be sure to type in the information specified in this note for your entries carefully and clearly.

This information will be used to contact you and to create the virtual show and the labels.

Note: When you submit work, *if you entered artwork in the past several RAL Shows*, you may see the images of those pieces. They are marked appropriately for those shows within the system.

If you need help, **please ask ahead of the deadline!**

You may enter work for this show **October 1 through November 1.**

Deadline for all entries is **Saturday, November 1.**

Notifications of acceptances will be sent out to all members and posted on the Rockville Art League website **by November 10.** This call for entries will be also posted on the website.

Questions regarding the show? Need help or support with the entry process?

Please contact:

Lisa Sieg: jshows@rockvilleartleague.org

Patrick Sieg: president@rockvilleartleague.org

Membership – It's time to renew!

We appreciate our members and their support for the Rockville Art League.

Our membership year runs from **September 1, 2025, to August 31, 2026.** If you haven't yet renewed, please consider renewing your membership. RAL dues are **\$40 for the entire year.**

Please renew and take advantage of our *members only* exhibition opportunities, the presentations and networking, and other benefits that can help you grow as an artist. We have six meetings a year, currently on zoom with excellent speakers, discussions, and demos. Please visit the website <https://rockvilleartleague.org> and click on the word *Membership* to see a complete list of membership benefits.

We began our Speaker Series on September 4 with an in-depth presentation by art historian **Dr. Irina Stotland on Romanticism and the Fall of Reason**. On October 9, we welcome abstract artist and educator **Steve Loya on Splotch Monster Basics 101**. On November 13, fine artist and instructor **Gonzalo Ruiz Navarro** will offer a presentation and demo.

Our monthly meetings this year are on Zoom. Zoom invitations are sent out a few days prior to the email you receive your RAL mailings. They are also posted on the website.

IMPORTANT: Please be sure the email is the one you check often and read. If your email has changed and you'd like to update it, you may easily do so by updating your preferences at the very bottom of the RAL mailings – or let us know.

We have two large, juried member shows, in winter and spring, and both feature virtual exhibits on the website and are in person at the Glenview Mansion Art Gallery. We also offer members unique opportunities such as the two themed shows immediately following the large, juried member shows. Our most recent themed show is CLOUD COVERS, still available to view virtually on the RAL website.

We are beginning to get ready for our **RAL Juried Members' Winter Show**. Please see all details in the call for entries in this newsletter.

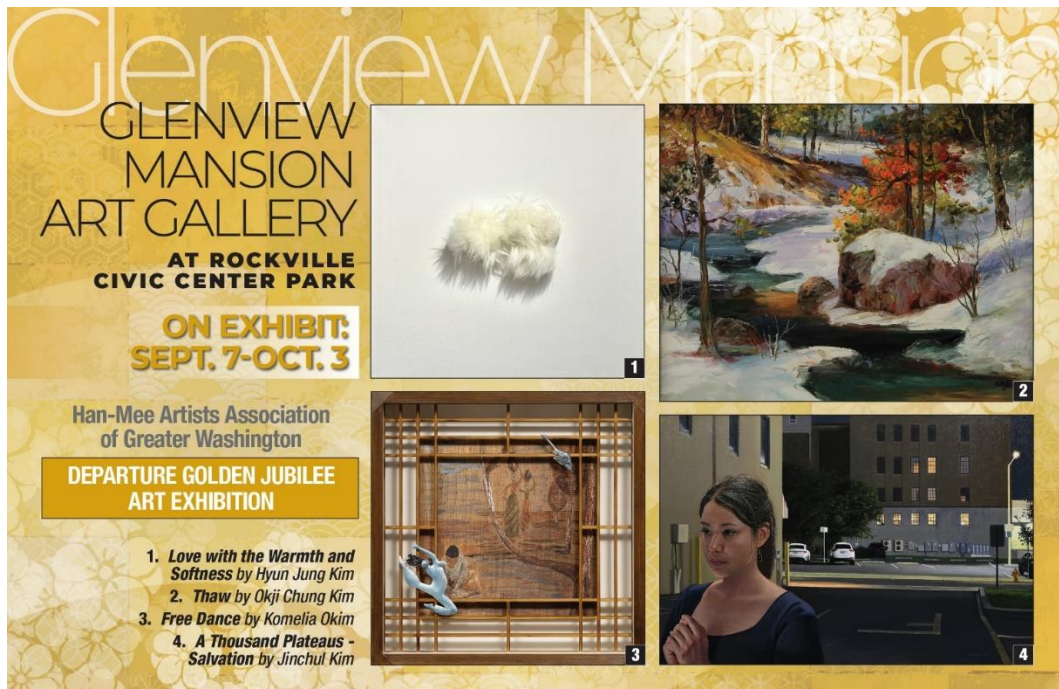
Membership is \$40. You can easily renew on the RAL website “pay now” button. Or, if you prefer to pay by check, please make it payable to **Rockville Art League** and mail to the treasurer at this address:
Rockville Art League
c/o Helen Wood
5926 Maplewood Park Pl
Bethesda, MD 20814

We kindly request that you do not send any payment to the RAL PO BOX.

Thank you to those who have already renewed, and a warm welcome to new members! **Unsure of your membership status?** Please send a note to: president@rockvilleartleague.org

Glenview Mansion Art Gallery Exhibitions

Glenview Mansion Art Gallery is located at 603 Edmonston Dr. at the Rockville Civic Center. Open weekdays, Monday – Friday, 9:00am-4:30pm. Please check the Glenview Mansion website <https://www.rockvillemd.gov/389/Glenview-Mansion> before coming out or call 240-314-8681. There is plenty of parking and an elevator to all levels of the gallery. The gallery is located on the 2nd floor. It is quiet and uncrowded during the week. **Meet the Artists** events are free and open to the public. Thank you for supporting the arts and your fellow artists.



Glenview Exhibition:

Han-Mee Artists Association of Greater Washington

Departure Golden Jubilee Art Exhibition

On Exhibit: [September 7](#) – [October 3](#)

Meet the artists: **Sunday, Sept. 7, 1:30-3:30pm**. The event and exhibit are free and open to the public. Everyone is welcome.

About the exhibit: HMAA is an organization of Korean-American artists who immigrated to the Washington D.C. metropolitan area over the last fifty years. Founded in 1975 by fifteen artists residing in the Washington Metro Area, HMAA serves as a platform for artists of Korean heritage to exhibit their unique works and support each other in their artistic pursuits. For five decades, HMAA members have showcased their art through individual and group exhibitions at notable museums and galleries in the Washington area, as well as internationally. Some of our members' works are part of permanent collections in several museums. Our members present their limitless vision, dedication, and individual creativity, sharing the spirit and culture of Korean Americans with this Golden Jubilee Art Exhibition. We strive to pass on our cultural heritage to the next generation, enhance our community with cultural diversity, and raise awareness of Korean-American culture within the Metropolitan D.C. area.

On Exhibit: Sept. 7-Oct. 3

Han-Mee Artists Association of Greater Washington

**DEPARTURE GOLDEN JUBILEE
ART EXHIBITION**

Meet the Artists from 1:30-3:30 p.m.
on **Sunday, Sept. 7.**

Event is free and open to the public.

For information, call 240-314-8681 or
240-314-8660. For recorded directions,
call 240-314-5004. Glenview Mansion Art
Gallery is wheelchair accessible. Gallery
Hours: Monday-Friday, 9 a.m.-4:30 p.m.;
gallery is closed on official city holidays.



**Glenview Mansion
Art Gallery**
at Rockville Civic Center Park
603 Edmonston Drive
Rockville, MD 20851



A poster for the Glenview Mansion Art Gallery exhibition. The top half features the text 'GLENVIEW MANSION AT ROCKVILLE CIVIC CENTER PARK ART GALLERY' in large, pink, serif capital letters. Below this, a white box contains the text 'ON EXHIBIT: OCT. 12-NOV. 26' and 'Maryland Pastel Society Shades of Pastel' in blue and black. At the bottom, a list of four artworks is provided: 1. 'Taking a Closer Look' by David C. Lawton, 2. 'Snuggles' by Joanne Schneider-Bee, 3. 'Bethlehem in the Snow' by Lorraine Ricciardi, and 4. 'Snowball Garden' by Carol A. Wilks. To the right of the text are four small images of the artworks, each labeled with a number in a black box. The bottom of the poster features the text 'Glenview Mansion' in a large, light blue, serif font.

Glenview Exhibition:

Maryland Pastel Society

Shades of Pastel

On Exhibit: **October 12 – November 26**

Founded in 1977, the Maryland Pastel Society is a non-profit organization devoted to the promotion and development of professional, original works of art in the medium of soft pastel and to the creative and technical development of its members. There are many local pastel societies throughout the country, but the Maryland Pastel Society is the oldest state society and is an active member of the International

Association of Pastel Societies. While the Society had its roots in the Baltimore area, its members (over 200 [today](#)) come from all over the Mid-Atlantic region. Our society aims to provide educational opportunities for artists and the public through the Society's website, lectures, art demonstrations, workshops, and art exhibitions.

<p>On Exhibit: Oct. 12-Nov. 26</p> <p>Maryland Pastel Society Shades of Pastel</p> <p>Meet the Artists from 1:30-3:30 p.m. on Sunday, Oct. 12. <i>Event is free and open to the public.</i></p> <p>For information, call 240-314-8681 or 240-314-8660. For recorded directions, call 240-314-5004. Glenview Mansion Art Gallery is wheelchair accessible. Gallery Hours: Monday-Friday, 9 a.m.-4:30 p.m.; gallery is closed on official city holidays.</p> <p></p>	<p>Glenview Mansion Art Gallery at Rockville Civic Center Park 603 Edmonston Drive Rockville, MD 20851</p> 
--	--

Rockville Art League *Juried Members' Winter Show*

On Exhibit: [December 7](#) – [January 16](#)

We have 2 large, juried member shows a year, one in winter and one in spring. This is not a themed show; the word winter indicates that this is the one held in winter. Members in good standing may enter up to 2 pieces of their best work that have not been accepted in a RAL Juried Members' Show to be considered by the judge for inclusion in this show. Please read all details carefully in this newsletter before entering work.

Virtual Shows, Sales, and Inquiries

Virtual shows are updated and posted to the Rockville Art League website by webmaster Michael Auger. **RAL's CLOUD COVERS Show** is available to view and share.

How to access the current virtual show and past ones:

Go to <https://rockvilleartleague.org> and click on the button for the current virtual show, CLOUD COVERS. (If you haven't visited the RAL website lately, you may need to hit refresh.)

Once you open the current virtual show, you can view all the work in the show, or if you prefer to see it by *specific artist*, click on the word "**Artists**" and, if you would like to view it by category of artwork, click on the word "**Rooms**". If you are interested in a specific piece, you can click on that artwork.

If you would like to view a different virtual show, click on the word "**Exhibitions**" and you will see the show cards from prior shows.

Find the show card of the one you would like to view and click on the name of the show (right below the show card and you can view that show. (Note: RAL's Artwork Archive account has the capacity to store up to 1000 images of artwork; as new shows are uploaded, the work in past shows are no longer viewable. We do retain records with images of work from past RAL shows.)

You can inquire or send a purchase request on the piece on the virtual show. On occasion, we receive inquiries for work in past shows still viewable through our virtual shows. Any inquiries or purchase requests are forwarded to the artist.

How to inquire about or purchase a piece in a Rockville Art League Show on display at Glenview:

If you are in the gallery at Glenview and you are interested in a piece in a RAL show, click on the **QR code** found right on the label below the work. Instructions are also found in the various rooms of the gallery. It's easy. Just **aim your smartphone at the QR code** and **click on the link** that appears, and it will take you to the piece. Once there, you will see the artwork, the medium, dimensions and, if the piece is available, the price. You can click on "Inquire" or "Purchase" if you are interested further. We forward all inquiries or purchase requests to the artist. If you are at Glenview and forgot your phone or just can't quite figure out a QR code, no worries. Either take a picture of the label or write down the name of the piece and contact either Lisa Sieg (jshows@rockvilleartleague.org) or Patrick Sieg (president@rockvilleartleague.org). Or go to the RAL website and look for us under contacts.

These shows are beautiful thanks to our talented members. The CLOUD COVERS Show is on display at Glenview through [August 29](#). Go see it in person!

Rockville Art League Speaker Series

We offer six presentations a year – September, October, November, February, March and April. The presentations this year are **on Zoom** with the invitations sent out a few days prior and also posted on the website. Please try to join us *in real time*! The speakers appreciate an audience and plan to allow time for Q&A.

As long as the speaker agrees, the zoom session will be recorded and sent out to members afterwards. Most links to the videos are available on the Rockville Art League's YouTube. Thanks to Helen Wood, you can access several past presentations and awards commentaries by going to the RAL website and clicking the icon for YouTube at the bottom of the page.

MEMBER NEWS



RAL member **Chris Luckman** was awarded honorable mention for her painting “Carroll Avenue Bridge”, which was on display in the “Power of Color” exhibit at the Maryland Federation of Art Gallery in Annapolis during the month of August 2025.

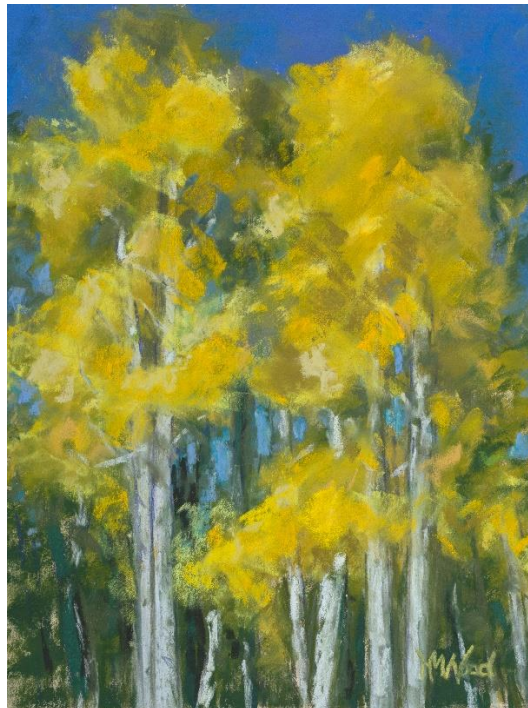


Holly Buehler will have a solo art show “Harmony & Heart” at the Yellow Barn Gallery Saturday October 4th, 12-8pm and Sunday October 5th, 12-5pm. The Artist’s Reception is Saturday October 4th, 5-8pm. The Yellow Barn Studio & Gallery is located in Glen Echo Park, 7300 MacArthur Blvd., Glen Echo, MD 20812. Please join us at the Yellow Barn Gallery. All are welcome! yellowbarnstudio.com hollybuehler.com





Cindy Rivarde will be showing her artwork at the Strathmore Mansion from Oct. 4 - Nov. 8.



Helen Wood's painting "Aspen Glow" was accepted into the Maryland Pastel Society's National Juried Exhibition, *Shades of Pastel 2025*. The show takes place October 12-November 26, 2025, at the Glenview Mansion, 603 Edmonston Drive, Rockville, MD 20851. Noted pastel artist Rita Kirkman served as Judge of Selections and Awards.



Maryland Pastel Society Presents:
A 3-Day Pastel Painting Workshop: Painting *the Light*
with acclaimed pastelist Rita Kirkman

October 8-10, 2025, 10am-4pm/\$345

Compass Art Center, 10335 Kensington Parkway,
Kensington MD 10335

This intensive three-day workshop will teach you how to infuse your paintings with warm sunlight. You will learn to nail your values using an acrylic-based underpainting, then identify and utilize color temperatures to make your paintings glow!




Accompanying concepts include simplicity of composition, color harmony, and frequent small works for more rapid improvement. This workshop is not subject specific. You can work from your own photos of whatever subject you prefer.


Rita Kirkman, PSA-MP, CPS, IAPS-EP

Kirkman has been using pastel since she was 11 years old. Since 2003 she has consistently won major awards in national and international competitions. She is a Pastel Society of America Master Pastelist and an Eminent Pastelist with the International Association of Pastel Societies. Her paintings have been featured in the Pastel Journal and the Pratique des Arts Spécial Pastel and published many others. Her work is in public and private collections worldwide. In 2020 she created a Patreon page, full of demo videos and art tips.


REGISTER NOW

Jae Shin has been working as a professional picture framer for 2 decades at the Framers' Workroom located in Tenleytown, DC. Jae offers 15% off on custom framing jobs for RAL members. Please feel free to contact Jae for any framing jobs. Framers' Workroom, 4431 Wisconsin Ave., NW, Washington DC 20016. 202-363-1970. Store hours: Mon-Sat 10:00-5:30. www.FramersWorkroomDC.com
Email: Jaeshin@FramersWorkroomDC.com

 **The Compass Atelier**
*Art classes for beginners and experienced artists
Special workshops Study Abroad
Home of the revolutionary Master Artist Program*



TheCompassAtelier.com TheCompassAtelier@gmail.com



A Work of Art by Debra Halprin
Giclée Printing and Photography Service
Create Fine Art Prints of your Artwork
on Watercolor Paper or Canvas
[Mastering the Fine Art of Giclée Printing](http://HalprinArt.com)
HalprinArt.com
301-910-4750
email: Debra@HalprinArt.com
in Rockville, Maryland

NEWSLETTER SUBMISSIONS

Is your art included in a show? Have other news you wish to share with RAL members?
Please send your submissions by the **15th** of each month for inclusion in the next newsletter, to:
newsletter@rockvilleartleague.org



Glenview Mansion Schedule				
2025				
Exhibition Dates:	ARTISTS	Delivery of Artwork	Meet the Artists Opening Event	Pick-up Artwork
September 7 – October 3	Glenview Exhibit Han-Mee Artists Association of Greater Washington <i>Departure Golden Jubilee Art Exhibition</i>	Tuesday, Sept. 2 12:30- 2:00pm	Sunday, Sept. 7, 1:30-3:30pm	Monday, October 6 9:00am-10:30am
October 12 – November 26	<i>Glenview Exhibit:</i> Maryland Pastel Society <i>Shades of Pastel</i>	Monday, Oct. 6 11:00am – 1:00pm	Sunday, Oct. 12, 1:30-3:30pm	Monday, Dec. 1 10:00am- 1:00pm
Dec. 7 – Jan. 16	Rockville Art League <i>Juried Winter Show</i>	TUESDAY, Dec. 2 10:00am – 1:00pm	Sunday, Dec. 7 1:30-3:30pm	TUESDAY, Jan. 20 10:00am – 1:00pm

Artists displaying work in the gallery at Glenview Mansion will be contacted with detailed information about their shows, including the required show agreement. Labels and support to hang the show will be provided. The RAL shows are virtual on our website as well as in person at Glenview

Meet the Artists opening events are free and open to the public. There is plenty of parking and an elevator to all levels of the gallery. The art gallery is open weekdays Monday-Friday, 9am-4:30pm. Closed on official city holidays.

Please check Glenview Mansion website: <https://www.rockvillemd.gov/389/Glenview-Mansion> or call 240-314-8681 or 240-314-8660 before visiting. Glenview Mansion is located at Rockville Civic Center Park, 603 Edmonston Dr., Rockville, MD.

Thank you for supporting the arts and your fellow artists!



RAL BOARD OF DIRECTORS

Name	Position	E-mail
Patrick Sieg	<i>President</i>	president@rockvilleartleague.org
Vacant	<i>President Elect</i>	president@rockvilleartleague.org
Lisa Sieg	<i>Vice President/ Exhibits Coordinator</i>	jshows@rockvilleartleague.org
Sarah Sohraby	<i>Program Coordinator</i>	programs@rockvilleartleague.org
Lisa Sieg	<i>Volunteer Coordinator</i>	volunteer@rockvilleartleague.org
Vacant	<i>Membership Coordinator</i>	membership@rockvilleartleague.org
Helen Wood	<i>Treasurer</i>	treasurer@rockvilleartleague.org
Cathy McDermott	<i>Secretary</i>	secretary@rockvilleartleague.org
Susan Dunnell	<i>Newsletter Editor</i>	newsletter@rockvilleartleague.org
Dave Allen	<i>Publicity/marketing</i>	publicity@rockvilleartleague.org
Helen Wood	<i>Communications</i>	communications@rockvilleartleague.org
Vacant	<i>Hospitality</i>	hospitality@rockvilleartleague.org
Michael Auger	<i>Webmaster</i>	webmaster@rockvilleartleague.org
Eileen Mader 1919-2016	<i>Founder</i>	

Rockville Art League
P.O. Box 4026
Rockville, MD 20850

