



RockvilleArtLeague.org Vol. XXXIV No. 2 October 2024

Next Meeting: Thursday, October 3, 7PM
Dr. Lorena Bradford: from the National Gallery of Art

Message from the President, Patrick Sieg

Dear esteemed artists and art lovers...members of the Rockville Art League,

Thank you to the many members that have already renewed their memberships this year. Without your renewals, we could not do the things that we are so proud of including hosting two juried shows and two theme shows each year, supporting of the local art community including scholarships for Montgomery College art students and inviting speakers at least six times per year. If you haven't renewed your membership please do soon, we need you and your artistry.

In the month of September, I will forward to each member in-good-standing (those who have renewed) their personal submission link and personal password. You will use this link and password for all RAL sponsored shows though the end of this membership year, August 31, 2025. Please keep it safe for future reference.

And speaking of proud, and of beautiful work, our league's artists were represented in the many Labor Day shows in our area and several members took home prizes and secured sales.

We kicked off the RAL year as we have for the previous seven years with an informative and enjoyable presentation by Dr. Irina Stotland. We are so lucky that she is willing to share her expertise with RAL. This year she shared one of her real passions, the Ukrainian Avant-garde artists from the early 20th century. This is a topic that I admit knowing nothing about and I am not alone in that. I can now say that I know a bit more about these important but little-known artists David Burliuk, Sonia Delaunay and Oleksandra Exter and how they influenced modern art. I learn so much every time she speaks with our group, about history, artists and creativity.

“Creativity is inventing, experimenting, growing, taking risks, breaking rules, making mistakes, and having fun.”

— Mary Lou Cook

We have speakers identified for October and November and I am looking forward to their presentations.

- In October art historian Lorena Bradford will share an artwork from the National Gallery of Art's collection and solicit comments and feedback from our members. In this session we will uncover new ways to view and experience art both individually and as a group. Dr. Bradford serves on the staff of the National Gallery of Art, and she developed this approach as a part of their community outreach initiative. We are lucky to have her for a private talk with our league.
- Since this will be an interactive program, I encourage you to log into this Zoom program in real time and to participate.
- In November photographer Michael Koren will speak with us covering the power of smart phone photography and tools we can use to enhance our images, and these tools are available in our devices. He will also share some of his recent artistry, photos and compositions.
Finally, it is the right time to begin thinking about the *Rockville Art League Juried Members' Winter Show*. Our juried shows are much anticipated, and the final exhibits are absolutely beautiful.
- Dr. Lorena Bradford will be back to judge our show. She judged a show for us in 2017 and our members much appreciated her insights and comparisons to the historical art masters in the National Gallery of Art's collection.
- The art submission dates are from October 1 to November 1.
- More details are provided later in our newsletter and please read them.

Thank you in advance for participating.

Finally, there is a beautiful show on display at Glenview Mansion this month with work from a group of talented and accomplished watercolorists. They call themselves "Salon 8" and you will be glad you visited this exhibition.

Thank you, Rockville Art League artists, for your creativity, for sharing your artwork and for making our league strong.

Sincerely,
Patrick Sieg
President, The Rockville Art League.

Rockville Art League Speaker Series – the presentations this fall will continue to be on Zoom.



Thursday, [October 3, 7:00 PM](#) Lorena Bradford on ***Let's Look Together***

We are delighted to welcome Dr. Lorena Bradford from the National Gallery of Art for an evening of looking at art together. Please mark your calendars and plan to join us in person on the zoom *in real time*.

Overview: Artists understandably think a lot about seeing. What do we see, and how do we see it? How will others see it, and how might we entice them to linger? Let's luxuriate in a long, slow look as we discover a work of art together over the course of an hour. Come with an open mind, fresh eyes, and a sense of curiosity for this interactive conversation facilitated by Lorena Bradford, manager of accessible programs at the National Gallery of Art.

Lorena Bradford has a Ph.D. in art history from the University of Delaware. She currently develops and oversees accessible programs and projects in the department of Learning & Engagement at the National Gallery of Art in Washington, DC. Additionally, she works with the Kennedy Center, the Smithsonian, and Scribely on accessible features, including audio description and writing. She has consulted and offered training on best practices for other museums and institutions in Washington, DC, across the nation, and abroad.

[Thursday, Nov. 7, 7:00 PM](#) Photographer Michael Koren on ***Artistic Expression with Mobile Photography***

Membership Call: Time to Renew!

Please support the Rockville Art League by renewing your membership. Our membership year runs from **September 1, 2024, to August 31, 2025**, and it is now time to renew your membership. RAL dues are **\$40 for the entire year**.

Please renew and take advantage of our *members only* exhibition opportunities, the presentations and networking, and other benefits that can help you grow as an artist. We have 6 meetings a year, currently on zoom with excellent speakers, discussions, and demos. Please visit the website <https://rockvilleartleague.org> and click on the word *Membership* to see a complete list of membership benefits.

We kicked off the year on **September 12** with an in-depth presentation by art historian Dr. Irina Stotland on *The Ukrainian Avant-Garde*. On **October 3**, we welcome Dr. Lorena Bradford from the National Gallery of Art to guide us as we look together at a selected piece of art.

Our monthly meetings this fall are on Zoom. Zoom invitations are sent out a few days prior to the email you receive your RAL mailings.

IMPORTANT: Please be sure the email is the one you check often and read. If your email has changed and you'd like to update it, you may easily do so by updating your preferences at the very bottom of the RAL mailings – or let us know.

We have two large, juried member shows, in winter and spring, and both feature virtual exhibits on the website and are in person at the Glenview Manion Art Gallery.

We also offer members unique opportunities. An example of a recent show opportunity was the beautiful ***RAL Water, Water Everywhere Show*** on display this summer at Glenview Mansion. We are getting ready for our ***RAL Juried Member's Winter Show***. Please see the call for entries in this newsletter. Your personal link and password to enter this show and other RAL shows this membership year will be sent to members in good standing by the end of Sept. by Patrick Sieg.

Membership is \$40. You can easily renew on the RAL website “pay now” button or if you prefer to pay by check, please make it payable to ***Rockville Art League*** and mail to:

Rockville Art League
c/o Rob Gale
108 W. Argyle St.
Rockville, MD 20850

Thank you to those who have already renewed, and a warm welcome to new members!

RAL Juried Members' Winter Show

DECEMBER 8, 2024 – JANUARY 17, 2025

Glenview Mansion Art Gallery

Call for entries: OCTOBER 1 – NOVEMBER 1. *Online submissions only.*

Judge: We are honored that Lorena Bradford will judge our Juried Members' Winter Show.

Lorena Bradford has a Ph.D. in art history from the University of Delaware. She currently develops and oversees accessible programs and projects in the department of Learning & Engagement at the National Gallery of Art in Washington, DC. Additionally, she works with the Kennedy Center, the Smithsonian, and Scribely on accessible features, including audio description and writing. She has consulted and offered training on best practices for other museums and institutions in Washington, DC, across the nation, and abroad.

On Exhibit: This juried show will be on display in person **December 8 through January 17** at Glenview Mansion Art Gallery (603 Edmonston Dr./Rockville) with the virtual show available on our website. Prizes awarded on **Sunday, Dec. 8, 2:00pm at Glenview.**

Please read all the information below carefully.

Call Deadline: *Members in good standing* may submit up to **two (2) pieces** of work to be considered by the judge for inclusion in this show **beginning October 1** through **Friday, November 1**. No submissions will be accepted after the deadline.

- This is NOT a themed show. We have 2 large, juried member shows a year, one in winter and one in spring. You may enter up to 2 pieces of your best work that have not been accepted in a RAL Juried Members' Show to be considered for inclusion.

*If your work is accepted into this show, you will be informed **by Friday, Nov. 11** with delivery of artwork on **Tuesday, Dec. 3**. Please note that the amount of time to frame your work is brief, especially with the Thanksgiving holiday.*

Entry Fee: A flat \$10 show fee will be collected **from artists that have their work accepted into this show** (not per piece).

IMPORTANT! By submitting work into this show, *you are agreeing to the terms of the **Show Agreement** listed here:*

“I agree to the rules of the show as presented in this show call and the schedule below, that my entries are my original works and have not been accepted into a previous **Rockville Art League Juried Members' Show**. I will not hold the Rockville Art League (RAL), Glenview Mansion, or the City of Rockville responsible for any possible loss or damage to my entries. As with any show, I understand that all reasonable care will be taken in the handling of my artwork. I give RAL, Glenview Mansion, and the City of Rockville permission to use images of my artwork and publish

them as appropriate. I acknowledge a commitment to donate 20% of the sale price of my work, if sold during this show at Glenview to the City of Rockville.”

Eligibility and rules: The following rules apply for all works entered.

- Each *member in good standing* may enter *up to two (2) pieces by the deadline*.
- **How to enter:** **submit your entries using your PERSONAL LINK and PASSWORD** that WILL be emailed to you emailed to you ***by the end of September***. Entries of *up to 2 pieces per artist for consideration* by the judge may be submitted by **Friday, November 1**.
- **For each submission:** you will be required to include: the **title, medium, dimensions** (note: depth is for sculpture only) and **market price** (NOT wholesale price!) (If the piece is Not for Sale, please leave blank and you will be contacted to confirm this) and **submit an image** (jpeg or jpg.) of your piece. The mat or the frame (or glass, glare, wall, furniture etc.) should NOT be visible in the image you submit. Just the artwork itself.
- **If your work is accepted into this show:** a \$10 show fee per artist (not per piece) will be collected at that time.
- RAL retains the right to determine suitability of work for entry in this show.

Artwork requirements: If your work is accepted into this show, *each 2-D piece must be ready for hanging*, gallery-wrapped or framed or professionally finished, **securely wired** by Tuesday, Dec. 3.

- The maximum measurement of any framed side is **48 inches**.
- Only **original** works **framed securely with hanging wire** are acceptable. (NO sawtooth hangers or such.) If submitting unframed canvas, edges should be painted or finished.
- **NO WET PAINT** is allowed.
- The **entries may NOT have been exhibited** previously in a ***RAL Juried Members' Show***.
- All artists are encouraged to sign their work on either the front or back.
- Entries not meeting the show conditions will not be accepted.
- All work must remain up until the end of the show.
- **Sales:** If any work sells while on display at Glenview, the artist agrees to donate 20% of the sales price to the City of Rockville as specified in the ***Show Agreement*** above.

Categories of Artwork Include:

- Oils and acrylics
- Watercolors
- Pastels, drawings, and hand-pulled prints
- Mixed media, collage, experimental, and original computer-generated art
- Photographs
- Sculpture and ceramics

Awards:

- Best in Show (cash prize)
- First, Second, Third in all categories (cash prizes)
- Honorable Mention at Judge's Discretion

Schedule:

- **October 1 - November 1** - you may enter **up to two (2) pieces for consideration** online using the link that will be sent to you by the end of Sept. Up to two (2) pieces per artist.

- **Friday, November 1 – Deadline for submissions**
- **Monday, November 11** – notifications of acceptances sent out to all members by this date. A show fee of \$10 (per artist) will be collected from those whose work is accepted into the show at that time.
- **TUESDAY, Dec. 3**— *delivery of accepted artwork* at Glenview, **10:00am-1:00pm**; if your work is accepted into this show, you or your designee must deliver your work during this time. The judge will award prizes based on an in-person view that afternoon.
- **Sunday, December 8, 1:30-3:30pm, Meet the Artists Opening** at Glenview Mansion. Lorena Bradford will **award prizes at 2:00pm** with remarks about the work. She will also be available during the afternoon to talk with artists.
- **Week of Dec. 9:** A zoom video of the judge discussing her awards choices will be sent out to all members.
- **TUESDAY, January 21 - pick up artwork** 10:00am-1:00pm. You or your designee must pick up your work on this date.

Please note: *Members in good standing** will have their personal link and password emailed to them the LAST WEEK of September. **PLEASE SAVE IT.** It will be the same one you use to enter all RAL shows this year.

**If you paid your dues for Sept. 1, 2024 – Aug. 31, 2025, you are a member in good standing.*
PLEASE: *if you are unsure of your membership status, ask us!*

You will use your personal link/password that will be sent to you at the end of September to enter your work in the show. Be sure to type in the information specified in this note for your entries carefully and clearly.

This information will be used to contact you and to create the virtual show and the labels.

Note: When you submit work, *if you entered artwork in the past several RAL Shows*, you may see the images of those pieces. They are marked appropriately for those shows within the system.

If you need help, **please ask ahead of the deadline!**

You may enter work for this show October 1 through November 1.

Deadline for all entries is **Friday, November 1.**

Notifications of acceptances will be sent out to all members and posted on the Rockville Art League website **by November 11.** This call for entries will be also posted on the website.

Questions regarding the show? Need help or support with the entry process?

Please contact:

Lisa Sieg: jshows@rockvilleartleague.org

Patrick Sieg: president@rockvilleartleague.org

Glenview Mansion Art Gallery Exhibitions

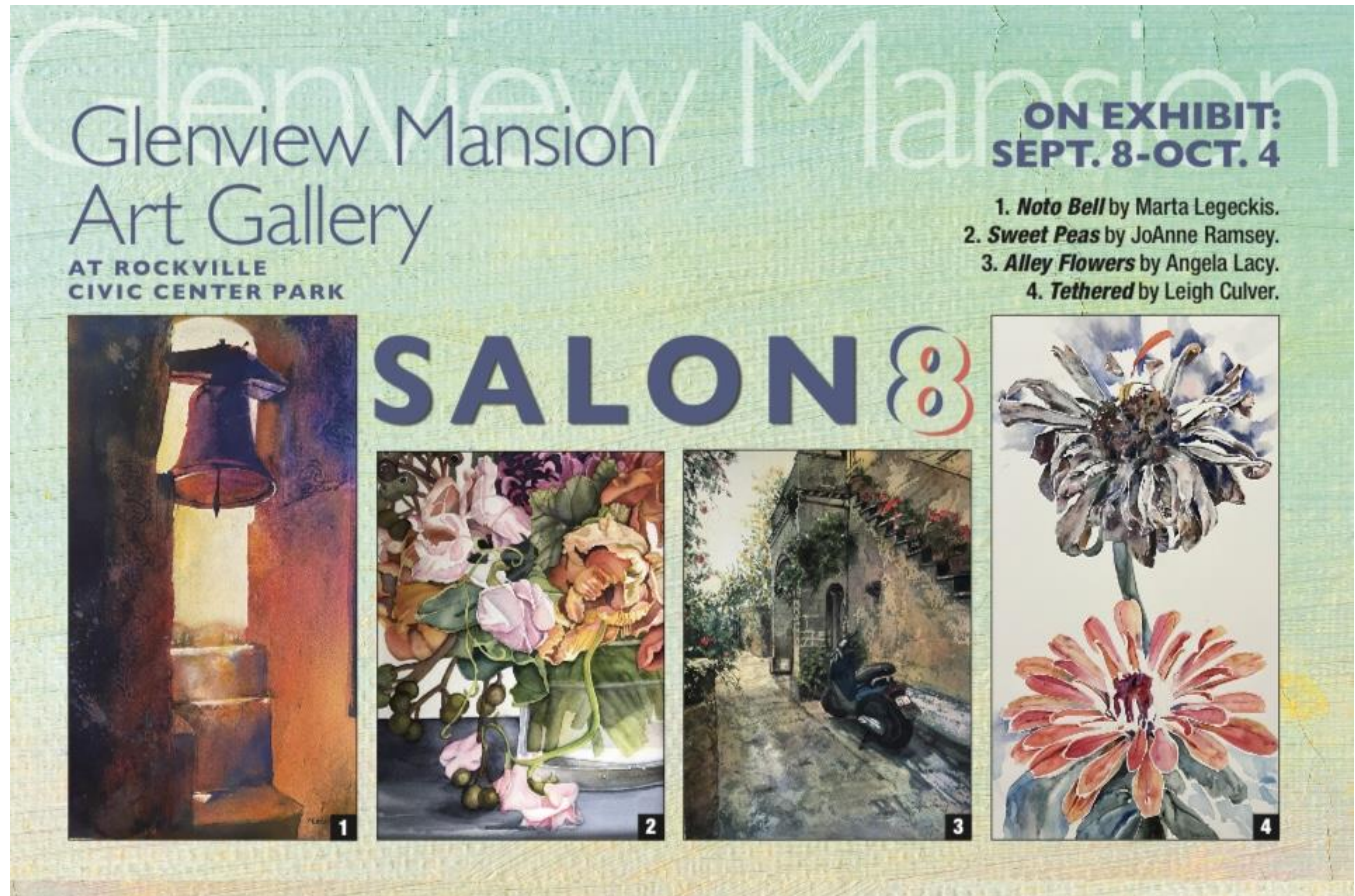
Glenview Mansion Art Gallery is located at 603 Edmonston Dr. at the Rockville Civic Center. Open weekdays, Monday – Friday, 9:00am-4:30pm. Please check the Glenview Mansion website <https://www.rockvillemd.gov/389/Glenview-Mansion> before coming out or call 240-314-8681. Plenty of parking and there is an elevator to all levels of the gallery. The gallery is located on the 2nd floor. It is quiet and uncrowded during the week. *Meet the Artists* events are free and open to the public. Thank you for supporting the arts and your fellow artists.

Glenview Mansion Exhibition

Salon 8

On Exhibit: September 8 – October 4

Watercolorists **Leigh Culver**, **Angela Lacy**, **Marta Legeckis**, **Emilie McBride**, **Margitta Hanff Potts**, and **JoAnne Ramsey** present their unique perceptions of the world through the medium of watercolor. This exhibit features a wide range of subjects, from florals to cityscapes, and showcases a variety of watercolor styles and techniques. This show is sponsored by the City of Rockville.



On Exhibit: Sept. 8-Oct. 4

SALON 8

Meet the artists from 1:30-3:30 p.m. Sunday, Sept. 8.
Event is free and open to the public.

Watercolorists Leigh Culver, Angela Lacy, Marta Legeckis, Yoshimi Matsukata, Emilie McBride, Margitta Hanff Potts and JoAnne Ramsey present their unique perceptions of the world through the medium of watercolor. This exhibit features a wide range of subjects, from florals to cityscapes, and showcases a variety of watercolor styles and techniques.

For information, call 240-314-8681 or 240-314-8660.

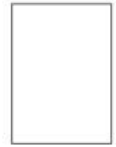
For recorded directions, call 240-314-5004. *Glenview Mansion Art Gallery is wheelchair accessible.*

Gallery Hours: Monday-Friday, 9 a.m.-4:30 p.m.; gallery is closed on official city holidays.



Glenview Mansion Art Gallery

at Rockville Civic Center Park
603 Edmonston Drive
Rockville, MD 20851



Glenview Mansion Exhibition

Montgomery Art Association's *Autumn Colors and Reflections*

On Exhibit: October 13 – November 27

Meet the Artists on October 13, 1:30-3:30pm – Everyone is welcome!

This show is sponsored by the City of Rockville.

Rockville Art League

Juried Members' Winter Show

On Exhibit: December 8 – January 17

Juried by Lorena Bradford. Please read details in the *call for entries* in this newsletter. This is one of our semi-annual large, juried member shows, with one in the winter and another in the spring. Members may enter up to two (2) pieces of their best work to be considered by the judge. This is not a themed show; the word winter just indicates the time of year. Entries accepted **October 1 - November 1**.

Rockville Art League

Winter Garden

On Exhibit: January 26 – February 14

All details for this *themed* show that will be in conjunction with the *Rockville Student Juried Art Show* will be forthcoming. We will be looking for your original creations of botanicals to transform the gallery into a *winter garden*. Please note that we are not accepting any entries for this themed show until December.

Virtual Shows, Sales, and Inquiries

Virtual shows are updated and posted to the Rockville Art League website by webmaster Michael Auger. The recent RAL exhibition may be over but the RAL *Water, Water Everywhere Show* is currently available to view.

How to access the current virtual show and past ones:

Go to <https://rockvilleartleague.org> and click on the button for the current virtual show, *RAL Water, Water Everywhere Show*. (If you haven't visited the RAL website lately, you may need to hit refresh.)

Once you open the current virtual show, you can view all the work in the show, or if you prefer to see it by *specific artist*, click on the word "Artists" and, if you would like to view it by category of artwork, click on the word "Rooms". If you are interested in a specific piece, you can click on that artwork. If you would like to view a past virtual show, click on the word "Exhibitions" and you will see the show cards from prior shows.

Find the show card of the one you would like to view and click on the name of the show (ex: *RAL Juried Members' Spring Show*, and *Portraits: Creatures Great or Small*) right below the show card and you can view that show. (Note: RAL's Artwork Archive account has the capacity to store up to 1000 images of artwork; as new shows are uploaded, the work in past shows are no longer viewable. We do retain records with images of work from past shows.)

You can inquire or send a purchase request on the piece on the virtual show. On occasion, we receive inquiries for work in past shows still viewable through our virtual shows. Any inquiries or purchase requests are forwarded to the artist.

These shows are beautiful thanks to our talented members.

RAL Speaker Series Presentations Available on YouTube

We offer 6 presentations a year in our *Speaker Series*. Because we meet on zoom, they are recorded and are sent out to members. Most of them are posted on RAL's YouTube, thanks to Helen Wood. If you have missed any of them, you can access them by going to the Rockville Art League website and scrolling to the very bottom of the page. Once there, click on the small icon to the left of the word YouTube.

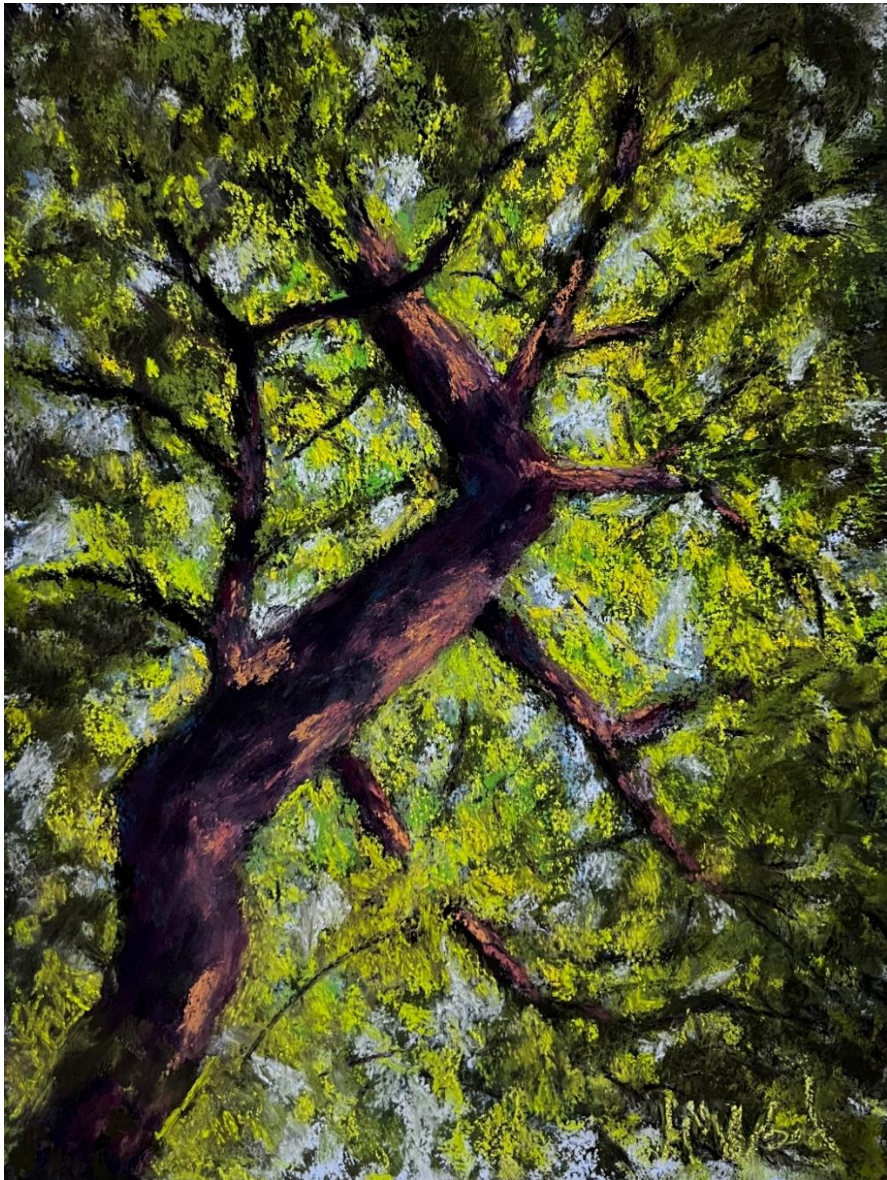
RAL Speaker Series Presentations Available on YouTube

We offer 6 presentations a year in our *Speaker Series*. Because we meet on zoom, they are recorded and are sent out to members and, also, posted on RAL's YouTube, thanks to Helen Wood. If you have missed any of them, you can access them by going to the Rockville Art League website and scrolling to the very bottom of the page. Once there, click on the small icon to the left of the word YouTube.

MEMBER NEWS

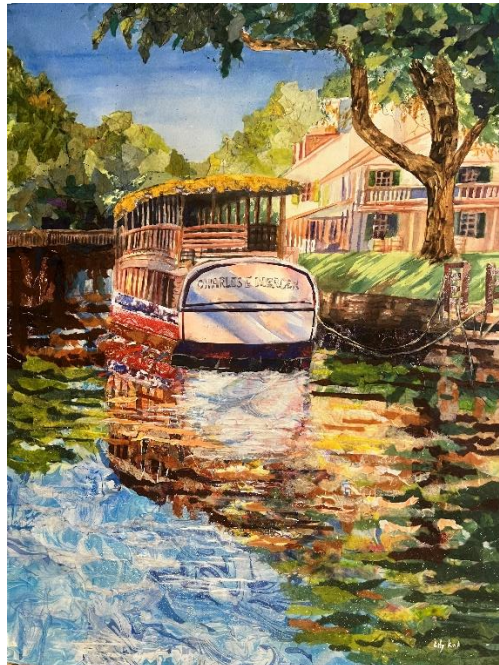
David Allen and **Helen Wood** have joined Gallery 209, a part of the Artists and Makers Studios (A&M) in Rockville, Maryland. Helen is their first pastel artist. Gallery 209 provides a venue for 19 local visual artists and sculptors, including several other members of the Rockville Art League, to show their work through changing exhibits each month.

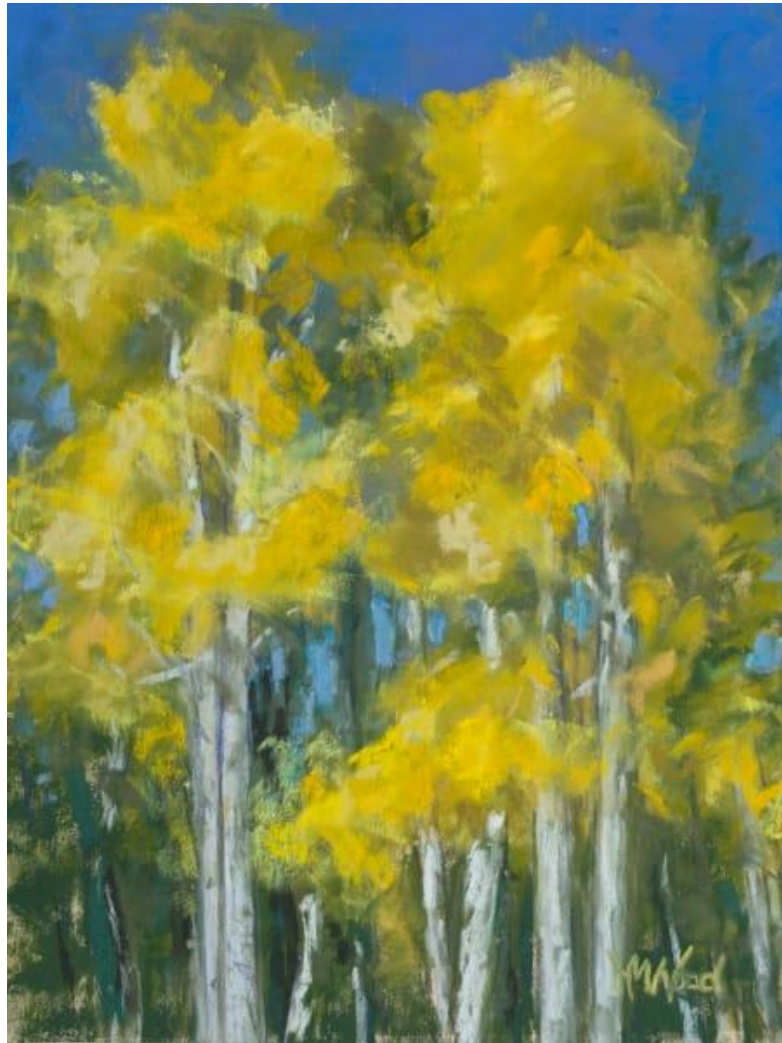
Helen has two works in the Maryland Pastel Society Luminosity of Pastels Signature Members Exhibition at the Tish Fine Art Plus Gallery in Chestertown, MD. The show runs until September 28. Shown here is her pastel painting “Skyward” (12x9”).





Lily Kak's watercolor painting "Queen of the Night," received the Best in Show award at the Drawing and Water Media Art Show at the Glen Echo Yellow Barn Gallery during the Labor Day weekend. She also received an Honorable Mention award for her watercolor and collage painting "Summer on the C&O Canal" at the Labor Day Art Show organized by the Montgomery Art Association.

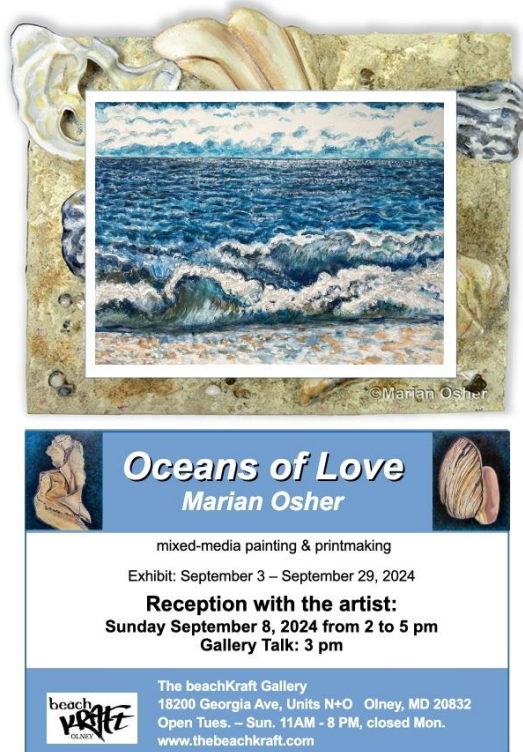




Helen Wood's pastel painting "Aspen Glow," was accepted in the Maryland Pastel Society 2024 All Members Juried Exhibition, *Symphony of Colors*. The exhibition runs through October 1, 2024, at Kentlands Mansion Gallery, Gaithersburg, Maryland 20878. She has also been named a Signature Artist member of the society.



Elizabeth Steel is one of 9 experienced women artists who have joined together to share their art and artistic travels. From August 26-September 28 they will present “Journeys,” a large exhibit of sculpture, paintings, and mixed media artwork at the Friendship Heights Village Community Center. Reception is scheduled for September 12, 6:30-8:30.



The beachKraft Gallery presents **Oceans of Love**, an art show of mixed-media painting and printmaking by RAL member **Marian Osher**. The artist will give a talk at the reception on Sunday September 8. The reception is from 2 to 5 pm, with the talk at 3 pm.

You might call Marian Osher a thalassophile, an ocean lover, because she finds endless inspiration from sand, surf, waves, sea creatures and the diversity of people on the beaches. The artist's grandmother, Cecilia Siskind, closed all her personal correspondences to family and friends with the salutation "Oceans of Love," although she rarely, if ever had been to the beach. So perhaps there is a genetic connection.

"What speaks to me about the ocean is the unity of the endless waves, the variety of interesting shells and creatures on the beach, and the diversity of people enjoying their chosen activities in the water and on the sand. I invite viewers to reflect on their own connections to the refreshing, creative and healing power of the beach and the ocean." Marian Osher

Osher uses a variety of textures and art media, bringing together rhythms, colors and people. Her acrylic paintings combine sand, shells, photo collage, and sculpted painted canvas shells in multi-dimensional art that breaks the surface of the canvas. Her monotype printmaking pushes past the flat plane of the paper into mixed-media, multi-dimensional monotypes on painted canvas.

the beachKraft Gallery

18200 Georgia Avenue, Unit O + N, Olney, MD 20832

(240)-608-2124

www.thebeachkraft.com

Discount on Custom Framing

Jae Shin has been working as a professional picture framer for 2 decades at the Framers' Workroom located in Tenleytown, DC. Jae offers 15% off on custom framing jobs for RAL members. Please feel free to contact Jae for any framing jobs. Framers' Workroom, 4431 Wisconsin Ave., NW, Washington DC 20016

202-363-1970. Store hours: Mon-Sat 10:00-5:30. www.FramersWorkroomDC.com

Email: Jaeshin@FramersWorkroomDC.com



Calling All Artists

Blossoms 2025 Countywide Art Show

**Call for Entry
NOW through Nov.1, 2024**

Theme: Pink/White Blossoms
All Mediums • All Ages


A Grant From




In Partnership With



The link to register is: https://artist.callforentry.org/festivals_unique_info.php?ID=13759

 **The Compass Atelier**
Art classes for beginners and experienced artists
Special workshops Study Abroad
Home of the revolutionary Master Artist Program



TheCompassAtelier.com TheCompassAtelier@gmail.com


A Work of Art by Debra Halprin
Giclée Printing and Photography Service
Create Fine Art Prints of your Artwork
on Watercolor Paper or Canvas
Mastering the Fine Art of Giclée Printing
HalprinArt.com
301-910-4750
email: Debra@HalprinArt.com
in Rockville, Maryland

NEWSLETTER SUBMISSIONS

Is your art included in a show? Have other news you wish to share with RAL members?
Please send your submissions by the **15th** of each month for inclusion in the next newsletter, to:
newsletter@rockvilleartleague.org



Glenview Mansion Schedule				
2024 - 2025				
Exhibition Dates:	ARTISTS	Delivery of Artwork 10am-1pm	<i>Meet the Artists</i> Opening Event	Pick-up Artwork 10am-1pm
Sept. 8 – Oct. 4	Glenview Exhibition: <i>Salon 8</i>	TUESDAY, Sept. 3, 10:00am-1:00pm	Sunday, Sept. 8 1:30-3:30pm	Monday, Oct. 4 10:00am-1pm
Oct. 13 – Nov.27	Glenview Exhibition: Montgomery Art Association <i>Fall Reflections</i>	Monday, Oct. 4 10:00am – 1:00pm	Sunday, October 13 1:30-3:30pm	TUESDAY, December 3 10:00am-1:00pm
Dec. 8, 2024 – Jan. 17, 2025	RAL Juried Members' Winter Show	TUESDAY, Dec. 3 10:00am – 1:00pm	Sunday, Dec. 8 1:30-3:30pm	TUESDAY, Jan. 21 10:00am-1:00pm
Jan. 26 - Feb. 14	RAL Themed Show and Student Art Show	TUESDAY, Jan.21 10:00am – 1:00pm	Sunday, Jan. 26 1:30-3:30pm	TUESDAY, Feb. 18 10:00am-1:00pm

Artists displaying work in the gallery at Glenview Mansion will be contacted with detailed information about their shows, including the required show agreement. Labels and support to hang the show will be provided. The RAL shows are virtual on our website as well as in person at Glenview.

Meet the Artists opening events are free and open to the public. Plenty of parking and there is an elevator to all levels of the gallery. The art gallery is open weekdays Monday-Friday, 9am-4:30pm. Closed on official city holidays.

Please check Glenview Mansion website: <https://www.rockvillemd.gov/389/Glenview-Mansion> or call 240-314-8681 or 240-314-8660 before visiting.

Glenview Mansion is located at Rockville Civic Center Park, 603 Edmonston Dr., Rockville, MD.

Thank you for supporting the arts and your fellow artists!

RAL BOARD OF DIRECTORS

Name	Position	E-mail
Patrick Sieg	<i>President</i>	president@rockvilleartleague.org
Vacant	<i>President Elect</i>	president@rockvilleartleague.org
Lisa Sieg	<i>Vice President/ Exhibits Coordinator</i>	jshows@rockvilleartleague.org
Richard Fisher Sarah Sohraby	<i>Program Coordinators</i>	programs@rockvilleartleague.org
Lisa Sieg	<i>Volunteer Coordinator</i>	volunteer@rockvilleartleague.org
Vacant	<i>Membership Coordinator</i>	membership@rockvilleartleague.org
Rob Gale	<i>Treasurer</i>	treasurer@rockvilleartleague.org
Cathy McDermott	<i>Secretary</i>	secretary@rockvilleartleague.org
Susan Dunnell	<i>Newsletter Editor</i>	newsletter@rockvilleartleague.org
Liliane Blom	<i>Liaison Officer</i>	liaison@rockvilleartleague.org
Dave Allen	<i>Publicity/marketing</i>	publicity@rockvilleartleague.org
Helen Wood	<i>Communications</i>	communications@rockvilleartleague.org
Vacant	<i>Hospitality</i>	hospitality@rockvilleartleague.org
Diane Jeang	<i>Member Shows</i>	mshows@rockvilleartleague.org
Michael Auger	<i>Webmaster</i>	webmaster@rockvilleartleague.org
Eileen Mader	<i>Founder</i>	

Rockville Art League
P.O. Box 4026
Rockville, MD 20850

