

RAL NEWSLETTER
Rockville Art League

RockvilleArtLeague.org

Vol. XXV No. 6

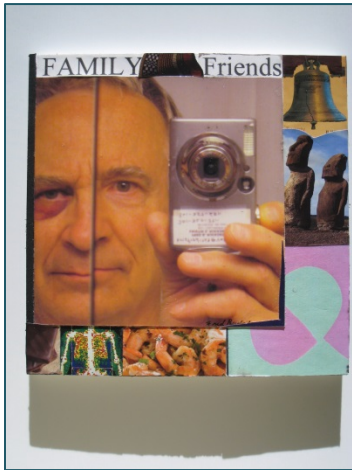
February 2016

NEXT MEETING: February 4th, 6:30PM

Speaker: Ed Brickler (Author of Making Art: Materials and Techniques for Today's Artist)

Dear Fellow Artists and Art Lovers,

Our Art League focuses on our producing art, showing our art, and learning from others, including from each other. But for me, I find also important, the contact with each of you, the companionship in RAL, and working with Board members and others. But



most important, I develop friendships.

In November, I had the pleasure of working with nine members to put on the show at the US Courthouse in Greenbelt. In December I entered my collages for jurying, I then decorated the tree in the Mansion and had spontaneous help from Emily Pearce and Ingrid Barnes, whom I had worked with 20 or so years ago on the Creative Crafts Council and had not seen since. Mansion staff also responded happily and helpfully when I need it.

Often in the past, I had the pleasure of working with Marian Mackerer and other members during the jurying process for, perhaps, eight shows. Working with the others has always been rewarding, not only getting to see all the entries but also enjoying the companionship of the others in a common endeavor. Working with some on several shows added to the enjoyment (if only I could remember everyone's name).

I became especially sensitized to this non-artistic benefit of being a member of RAL a couple weeks before Christmas. My wife was hospitalized for nine days with very severe pains owing to a compression fracture in a vertebra. Several RAL members who I had contact with during that time were supportive with their concern. Others of you were potentially helpful. For I believed I could call a number of you for some conversation were I to feel isolated and needing human contact.

As it turned out, I did not need to call. My sons and their wives pitched in. I stayed at nights with one who lives near Baltimore, where Kristin was treated at Johns Hopkins and her pains abated. I hope others of you have the same sense of satisfying, often joyful, personal contact with fellow members.

Best wishes to all of you and your families for a healthy and satisfying 2016.

Fred Ruckdeschel – President, RAL

**February's Speaker: Ed Brickler
6:30PM, February 4**

FREE SAMPLES!! DOOR PRIZES!!

Please attend RAL's February meeting and meet and hear Ed Brickler, artist and author of [Making Art: Materials and Techniques for Today's Artist](#), and Director of Fine Art Education for Canson Papers. Ed will guide us through the latest in art papers and answer questions about what works best for the art you are making. We'll all learn a lot!

Do you know when to use art board or when to use what kind of paper? What is oil paper? What support is best for collage? What kinds of sketchbooks work best for your work—field books, heavy paper? What questions do you have about watercolor paper and boards? Come to the meeting and find out what you want to know! Go home with samples to try! Maybe win a door prize! Have fun! See you there!

<http://www.edbrickler-artist.com/index.asp>

**Upcoming Events:
Rockville Student Art Show
Volunteers Still Needed!**

Our next gallery event is coming up in February with the Student Art Show. The City of Rockville runs the show for all children K-12. RAL provides volunteers, judges the show, and gives out the awards. Volunteers for this show are exempted from the entry fee for the May Members' Show!

If you are interested in volunteering please contact Emily Pearce at ekepearce@gmail.com.

Volunteer dates and times are below:

Sun., Feb. 28: 1:30-3:30PM
artwork delivery
3:30-5PM
judging

Mon., Feb. 29: 2:00-5:00PM
start hanging (2 volunteers each shift)

Tues., March 1: 10AM-Noon & 2-4PM
hang & light

Wed., March 2: 10AM-Noon & 2-4PM
hang & light

Thurs., March 3: 10AM-Noon & 2-4pm
tag & write certificates

Fri., March 4: 10AM-Noon
tag

Sunday, March 6: 1:30-3:30PM
opening reception

We also need volunteers to help with handing out certificates and refreshments.

Thursday, March 24: 3-5PM & 6-8PM
artwork pick up
need 2 volunteers each shift

Please get involved! Consider joining the RAL Leadership!

New board members are elected to the RAL Board each May. Board meetings are held at Glenview Mansion the first Thursday of each month at 6:00PM, prior to the general meeting.

Board of Directors' Opening

Secretary: Take minutes at each meeting. Direct questions to outgoing Secretary, Emily Pearce (ekepearce@gmail.com)

Committee Openings

Publicity Committee: Publicizes RAL shows and other events to the general public, sends opening invitations to special guests, maintains RAL's Facebook page.

Program Committee: Schedules guest speakers and activities for RAL monthly meetings (Sept, Oct, Nov; Feb, Mar, Apr); coordinates other RAL activities or outings. Direct questions to outgoing Program Committee Chairs: Nancy Hannans (nancyhannans@gmail.com) and Sallye Mahan-Cox (smahancox@yahoo.com).

Welcome New Show Coordinators: Pat and Lisa Sieg!

Many, many, thanks to Pat and Lisa Sieg for volunteering to take on the role of Show Coordinators for RAL. Pat and Lisa will be taking over Show Coordinating duties from Emily Pearce at the end of this program year.

Patrick Sieg grew up in Olney, MD. He graduated from Washington and Lee University with a B.S. in Business and Finance and minored in studio art. His study of art in college led to a lifelong interest in painting, artists, and the creative process. After college Pat chose a career in business and finance. His long career with Marriott International afforded him the opportunity to live in many different cities in the U.S., Europe and the Middle East. He always allocated time in his travels to absorb the local culture by attending art exhibitions and visiting museums; this has influenced his art. After leaving Marriott, Pat decided to revisit his love of art and to focus on oil painting. He is continuing his studies and creative growth through classes at the Yellow Barn Studio in Glen Echo.

Pat is supported in this pursuit by his family, all of whom are talented artists. His wife, Lisa, is a

photographer, colorist, and home chef. His oldest son, Robert, is studying Industrial Design at the California College of Art. His daughter, Erica, is a creative writer and studying law at Washington and Lee Law School. His younger son, Stephan, is pursuing a degree at Dickinson College where he is a Studio Art major.

Lisa Sieg has led a nomadic life, born into a military family and travelling the world with husband Pat during his long career with Marriott International. She has travelled extensively throughout the U.S., Europe and the Middle East and has moved 22 times. She gained appreciation for each locale's culture – the food, the art and the customs unique to a place.

Lisa studied the Classics and History at Randolph-Macon Woman's College and taught Latin, History and English for several years. She also has worked for at Williams-Sonoma, and studied ballet for 18 years. Her proudest achievement has been raising three successful children. She has devoted a lot of energy to literacy and the fine arts, including communications for the drama and music programs in the Magruder High School cluster.

Lisa is currently pursuing her love for photography at Glen Echo's Photoworks; and is also a friend of the Yellow Barn Studio. When not behind the camera, on the computer or walking either through art galleries, or the great outdoors, you can find her in the kitchen doing one of her favorite things: cooking. Find her photos on Facebook, Twitter and Instagram.

--Emily Pearce

Tips from Penny Kritt

Edges

One of the most effective tools the artist has is the transition from one shape to another. There are four basic forms: Hard, Soft, Gradual and Lost.

Hard Edges:

In Figure 1 below, there is a clear demarcation of where the pink shape ends and the aqua one begins.



Figure 1 – Hard Edge

The most common use of a hard edge is to show where one shape or thing ends and the next begins. In Figure 1 above, the pink shape is completely separate from the aqua one.

While you may need hard edges for shapes, sometimes it can lead to confusion. In Figure 2 below, it appears that there is a giant mouse about the same size as the cat.



Figure 2

The Benefits of Overlapping Hard Edges:

1. Adding depth to your composition:

The same size figures are also shown in Figure 3 below. Because the mouse overlaps the cat, we now infer that they are both normal size, but the cat is far in the background. That in turn changes the whole feel of the image -- don't you feel a sigh of relief that the mouse is not in imminent danger?



Figure 3

2. More interesting shapes:

Overlapping shapes with hard edges creates a *compound shape* which can be much more interesting than the original shapes in a separated form.



Figure 4

The symmetry makes a calm image (see Figure 5 below), but maybe it's so calm that it's boring. Like most paintings of dancers, this has a landscape orientation (the width is greater than the height).



Figure 5

Let's tweak overlapping images to make something more interesting.

3. Changing the orientation of a composition:



Figure 6

Even though I added a figure on the right, now there is a portrait orientation (taller than wide) so the composition structure takes a new view of a standard subject. The larger figure on the right is clearly the nearest to the viewer. Note that, the closer the feet are to the bottom of the painting, the nearer the person. With the chorus line to the left in *Figure 6*, you see that the figures are standing at a diagonal to the prima ballerina. In *Figure 5* above, they are all standing at the same distance from the front of the stage.

Tip: This is a valuable concept for those who are entering art shows. Like others, when I judge a show, I consider how accurately the subject is portrayed. But if there are multiple versions of the same topic, an unusual or unexpected version will always beat out the more typical representation. (Hey, floral painters – this especially means *you!*)

Soft Edges:

Unlike hard edges that define the exact borders of a shape, soft edges have a short transitional overlap between shapes.



Figure 7



Figure 8

This blurring of values/colors is another way to show distance. Look at the mountains in *Figure 8* above. In foreground, you see individual green trees and they have well-defined edges at the top of that mountain. As you look further into the distance, each mountain gets bluer, the edges get softer and there is less definition than the next closer mountain.

Tip: If your clouds look like they are pasted on instead of floating in the sky, the problem is that you have hard edges all around the cloud shape. Always soften the bottom edge!

Gradual Edge Change:

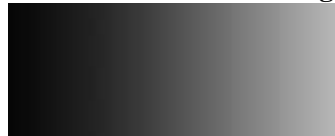


Figure 9

Figure 9 above shows a gradual lightening from the left to the right side. This is a standard method of making an object look round by showing its relation to a light source. In *Figure 10* below, we see the effect of a sunny day on a ball (left). The part of the ball closest to the light source in the upper left is lighter; the right side and bottom of the ball are further away and gradually get darker. The ball on the right got the same treatment but with hard edges. It looks angular instead of round.

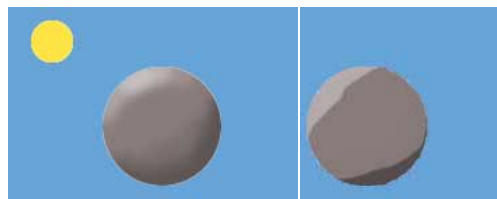


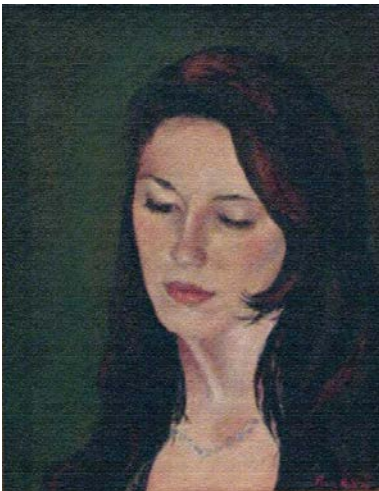
Figure 10

When doing a landscape, the part of a sunny sky at the top of the picture space is closer to French Ultramarine (blue with some red). As the sky recedes down to the horizon (and toward the bottom of the painting), it becomes lighter and greener, closer to cerulean (*Figure 11* below).



Figure 11

Lost Edge:



McKenzie
Acrylic on Canvas
By Penny Kritt

In *McKenzie* above, the outline of her hair on the left side of her head is subtly defined against the background. On the right side of her head, her hair blends seamlessly into the background that is a similar dark value. Putting more detail into that shape would detract from the soft, contemplative mood of the painting.

So make your work edgier! Happy painting!

**For classes or private lessons, contact Penny at
301/989-1799
©Penny Kritt 2013**

MEMBER NEWS

Judy Prevo's works will be exhibited at Brookside Gardens Visitor's Center from January 23 through February 21, 2016. Her works include watercolor and acrylic experimental paintings that are plant and nature related. They will be located in the Education Hallway. Brookside Gardens has undergone an extensive remodeling of the parking and surrounding area of the Visitor's Center. It is even more beautiful! The address is 1800 Glenallan Avenue, Wheaton, Maryland. The Visitor's Center hours are 9:00 a.m. - 5:00 p.m. (301) 962-1400.



Bovine Abduction II
© Copyright Michael Auger
www.arty4ever.com

The offbeat artwork of **Michael Auger** (last name pronounced: O-'zha / rhymes with okay) will be featured in a solo exhibit at the Glenview Mansion, February 7 – 26, 2016. Auger is an active member of the Rockville Art League and is known for his bold and colorful paintings which feature an assortment of animals, crazy characters, mythical monsters and more! There will be an opening reception on Sunday, February 7th.

For details, sign up for Auger's mailing list at: Arty4ever.com

Classes with Penny Kritt

Montgomery County Classes – Register online at www.activemontgomery.com and search for “Kritt” to find all my classes. You can also register at your library or community center.

Painting Spring with Kritt – 4 classes

All Levels - Tulips to dogwoods and cherry blossoms, a few strokes and you've made magic. You can even paint a whole garden. Simple techniques create great art. Work in a real art studio and be inspired! For supplies call Penny at 301-989-1799

Tuesday AM (10A – noon) Class No. 111572
Tuesday PM (7-9PM) Class No. 11573
February 16 to March 8, 2016
Kritt Studio, Burtonsville, MD

Kritt Studio Private Sessions
(not through Montgomery County):

On-going Open Studio

For more than 12 years, every Wednesday morning, a group of talented artists meet to share ideas, inspirations and to get a professional critique on their work. Topics can range from best materials for a project to composition and design help. *If you're an advanced artist – or you'd like to paint like one, this is the supportive place where your talent will blossom.*

Wednesday AM (10A – noon)
Kritt Studio, Burtonsville, MD
Contact Penny at 301/989-1799 to register




Giclée Printing & Photography
Create Fine Art Reproductions of Your Artwork on Watercolor Paper or Canvas

A Work of Art by Debra Halprin

.11 cents per sq. inch on paper
.14 cents per sq. inch on canvas
\$35 Photography Fee - Includes Proofs and Color Enhancements

For All Your Giclée Printing Needs
www.Halprinart.com
301-260-9701

ART OPPORTUNITIES




The Village at Rockville
presents
Inspire Your Heart With Art

An art show celebrating senior artists in our community
Friday, January 29, 2015
4:00 to 6:00pm
Lang Hall
9701 Viers Drive

If you would like your artwork displayed please submit a photo by January 1, 2016
All mediums welcomed. Must be at least 60 years young.

Melissa Blackstone
Phone: 301.354.8466
Fax: 301.424.9574
mblackstone@thevillageatrockville.org
www.thevillageatrockville.org



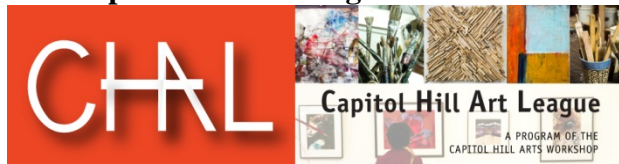
The Village at Rockville
A National Lutheran Community

The Village at Rockville is having an “Inspire Your Heart With Art” Show to celebrate senior artists ages 60 and older. All mediums are welcome (photography, oil pastels, needlework, etc.). The show will be held on Friday, **January 29**, from 4:00-6:00 pm at The Village at Rockville. Artists have the option of selling

their artwork. Please contact Melissa Blackstone for an application.

Melissa Blackstone, *Volunteer Coordinator*
The Village at Rockville, 9701 Veirs Dr.
Rockville, MD 20850
Direct: 301-354-8466
Main: 301-424-9560 Ext: 17402
Thevillageatrockville.org

The Capitol Hill Art League



Presents:

The Sixth Annual Metro DC Open-Call Juried Exhibition: **APPETITE FOR ART**

Capitol Hill Art League's (CHAL) Appetite for Art 2016 Exhibit calls for humble vegetables, fizz from your favorite cocktail, a family eating together and more food-related art works. Following the delicious success of the 2015 Food for Thought Open Call Exhibit, CHAL is looking for 2-D and 3-D works of art that creatively capture the ever-popular topic of food. Stephen Cheung, renowned DC chef and owner of Lavagna Restaurant, and Deirdre Ehlen MacWilliams, Public Art Project Manager and Curator & Independent Art Consultant, will combine their food and art experiences to select 30 art works and pick five winners for cash prizes. All artists, 18 years of age or older residing in the Washington, DC metropolitan area are eligible to enter. Deadline for submissions is Tuesday, February 16, 2016 at 11:55 PM.

The Capitol Hill Art League (CHAL) is a program of the Capitol Hill Arts Workshop (CHAW). Located in the historic Capitol Hill neighborhood in Washington, DC, CHAL is composed of nearly 100 artists. Each season CHAL mounts a series of juried exhibitions,

both at CHAW and at external venues, with gallery talks at the openings. CHAL hosts lectures on art-related topics, offers workshops, and strives to develop a supportive artistic community. The greater Washington community is encouraged to participate in these events.

ENTRY: Selections for the exhibition will be made by the jurors from JPEG images submitted by the artists. All work must be original and signed by the artist. Any work previously shown at a Capitol Hill Art League juried exhibition is ineligible. All work must have been created within the last three years.

ENTRY FEES: Up to three entries may be submitted for a non-refundable fee of \$30 (current Capitol Hill Art League members, \$20). Up to two additional entries may be submitted at \$5 each. Artists submitting three-dimensional work may provide two images of each piece. **AWARDS:** Awards will be decided by the jurors and will include cash awards for "Best in Show", and "Merit" awards. Two "Honorable Mentions" also will be awarded.

SALES: A 25% commission on all exhibition sales will be deducted from the pre-tax sales price. All work must be for sale and the price submitted on the registration form will be the price presented at the time of the show for accepted work.

Entry Process: Entrants must submit digital images in the online process at Smarter Entry.

To enter, go to
<https://client.smarterentry.com/CHAL>

NECESSARY INFO WILL INCLUDE:
TITLE, ARTIST NAME, MEDIA,
DIMENSIONS, AND PRICE

Digital files for viewing should be JPG format at 300 ppi, saved at high quality level with the longest dimension no more than 2000 pixels. Size limits: The size of wall-hung work must

be no larger than a maximum of 48 inches in either direction and weigh no more than 30 lbs. 3-D pieces must fit on pedestals that are 12"x12"; no 3-D work can be installed on the floor. Contact info: CHALartists@gmail.com Prospectus at: <http://www.caphillartleague.org> Accepted Work: Notifications will be emailed to artists with accepted work on or about Saturday, February 20, 2016. Artists will be responsible for the delivery of work to and pick up from the gallery within specified timeframe.

Delivery is February 28–March 2, 2016 during regular business hours at CHAW—See www.chaw.org for up-to-date opening hours. Art work must be hand-delivered to the Gallery; no work will be accepted by mail or other delivery services. If the work delivered deviates greatly from the submitted original digital images, CHAL reserves the right to decline the work.

Please note: Any pieces delivered that are not exhibition-ready with proper framing, hanging wires, etc., or bases for 3-D work, will not be exhibited, no exceptions. Neither CHAW staff nor CHAL volunteers will fix works that are not exhibition-ready; that is the sole responsibility of the artist. Agreement: Submission of .jpg files to this exhibition constitutes agreement on the part of the artist to all terms and conditions of this prospectus, including the right of CHAW and CHAL to use the .jpg images for publicity purposes.

2016 Exhibition Calendar:

FEBRUARY 16—deadline for entries

FEBRUARY 20—Notification sent to accepted Artists via email

FEBRUARY 27–MARCH 2—Delivery of accepted art pieces during regular business hours at CHAW

MARCH 5—Artists' Reception, Juror's Talk, and Awards Presentation (5:00–7:00PM)

APRIL 15—Exhibition closes APRIL 16–20—Artists must pick up artwork on these days during regular business hours at CHAW.

Northern Virginia Art Center's new Specials Exhibitions space. The Northern Virginia Art Center is searching for talented professional artists with a cohesive body of work to exhibit in their new Special Exhibitions space in the heart of Crystal City's thriving restaurant district. 380 square feet of gleaming exhibition space available for monthly exhibits of 2D or 3D art! Their full time gallery staff will assist in exhibit installation, process sales of your work, and will coordinate your opening reception, all for a small fee and low sales commission.

Eligibility: Open; **Deadline:** Ongoing
Entry Fee: N/A

http://novaartcenter.org/our-mission/show-opportunities/?utm_source=PROJECTOR%206-27-13&utm_campaign=Projector&utm_medium=email

Rockville Innovation Center Call for Entries Rockville Innovation Center is interested in showcasing the work of local artists in their gorgeous location.

<http://www.visartsatrockville.org/call-for-entries/feast>

Eligibility: Open; **Deadline:** Ongoing
Entry Fee: N/A

DC Photo Grid. The DC Photo Grid is an aggregated map of the city generated from user-submitted photographs, and the DC Crowd-Sourced Video Project offers a constantly looping portrait of the city as viewed by its inhabitants.

http://www.dcphtogrid.com/?utm_source=PROJECTOR+6-27-13&utm_campaign=Projector&utm_medium=email

Eligibility: Open; **Deadline:** Ongoing/**Entry Fee:** N/A

GLENVIEW MANSION CONFERENCE ROOM SHOWS

You can show your artwork in Glenview Mansion for one month if you have received a 1st, 2nd, 3rd or honorable mention award in an RAL juried show. Artists may have both rooms to exhibit in if a second artist doesn't sign up for the same month within two months of the show's start date. The receptions at Glenview mansion are 1:30-3:30 PM on the **Sunday** after hanging. Preferred drop off and pick up times for Glenview Shows are from 9 am to 12 noon. Drop off/pickups are Mondays (unless a holiday). If you are unavailable on the date for pickup, please arrange for someone to pick up for you. There is no room to store your artwork at the Mansion. If you are unable to drop off/pick up on the assigned dates and you can't find someone else to drop off/pick up for you, please choose a month in which you can make those dates.

For artwork delivery, please unwrap your work and take the wrappings with you. Please bring pliers (needle nose are easy to work with). You may use the hand truck that is at the Mansion to move your artwork from your vehicle. There is no staff at the mansion available to help you move your artwork into the conference rooms. You are responsible for hanging your own artwork, with help from the Mansion staff. If you don't have labels for your work, please fill out the RAL cards that will be available. If you print your own, print them on card stock. Do not use the sticky Avery labels, unless you adhere them to foam core or card stock. **Contact Diane Jeang, Glenview Member Show Coordinator, (301) 871-1589 or swinedoc@yahoo.com with questions.** If you need to contact Julie Farrell, please send an email to tojfarrell@rockvillemd.gov.

Monday delivery and hanging: 9AM–12PM / Sunday Gallery Opening: 1:30—3:30PM
 Monday Pick up: 9AM—11AM

2016	Member(s)	Monday (generally) Deliver and Hang Before 12 noon	Sunday Gallery Opening 1:30 – 3:30 pm	Monday Pick up Before 11 am
JAN	Sabiho Iqbal	Jan. 4	Jan. 10	Feb. 1
FEB	Carlos Garcia (2)	Feb. 1	Feb. 7	Feb. 26
MAR	Student Art Show	Feb. 28	March 6	March 24
APR	Fred Ruckdeschel (2)	March 28	April 3	April 25
MAY	RAL Spring Show	April 25	May 1	May 25
JUN	Board Member's Show	May 31	June 5	June 27
JUL	Diane Jeang	June 27	July 10	Aug. 1
AUG		Aug. 1	Aug. 7	Aug. 29
SEP	Jorge Bernal (2)	Aug. 29	Sept. 11	Oct. 3
OCT	Linda Greigg + Suzie Weiss (2)	Oct. 3	Oct. 9	Oct. 31
NOV	Philip Bennet (2)	Oct. 31	Nov. 6	Nov. 28
DEC	RAL Winter Show	11/28&29	Dec. 4	Dec. 30

For additional information for members hanging in the conference rooms, please refer to the RAL web page: <http://www.rockvilleartleague.org/glenview.pdf>

At least one platter of finger foods (cookies, crackers/cheese, veggies/dip) should be supplied by the RAL artist on the day of the opening reception. Cups/napkins/water is provided by the City of

Rockville for opening receptions. The Mansion will be open at 1 pm for the artist on the day of the opening reception.

Glenview/Open Show Coordinator: Diane Jeang, (301) 871-1589 E-mail: swinedoc@yahoo.com

RAL ONGOING SHOW LIST

Twinbrook Library - 202 Meadow Hall Drive, Rockville, Maryland

Shows are now 1 month in length. 5 medium to large paintings, Contact person: Chris Lindy (240)-777-0240, christinelundy@montgomerycountymd.gov

<u>Name</u>	<u>From</u>	<u>To</u>
Open	Dec. 15, 2015	Feb. 15, 2016

Thomas Farm Community Center – 700 Falls Grove Drive, Rockville, Maryland

12-16 medium to large paintings, Contact person: Martha Coester (240) 314-8842

<u>Name</u>	<u>From</u>	<u>To</u>
Valthea Fry	Oct. 15, 2015	Jan. 15, 2016
Leita Gerson	Feb. 15, 2016	Jun. 15, 2016

Marilyn J. Praisner Library – 14910 Old Columbia Road, Burtonsville, Maryland

10 small to medium or 5-6 large paintings (10 hanging chains), Contact person: (240) 773-9455, Vera Ramaty.

<u>Name</u>	<u>From</u>	<u>To</u>
Open	Dec. 15, 2015	Feb. 15, 2016

RAL BOARD OF DIRECTORS

Position	Name	Phone	E-mail
<i>President</i>	Fred Ruckdeschel	301-320-3911	fred.ruckdeschel.and.art@gmail.com
<i>1st Vice President</i>	Craig Whitt		craigheartist@gmail.com
<i>Treasurer</i>	Patricia Zannie	301-962-8581	patriciacollages@yahoo.com
<i>Secretary</i>	Emily Pearce	919-699-2547	ekepearce@gmail.com
<i>Membership</i>	Susan Dunnell	301-949-1514	dunnz@erols.com
<i>RAL Juried Show Coordinator</i>	Emily Pearce	919-699-2547	ekepearce@gmail.com
<i>Publicity/marketing</i>	VACANT		
<i>Newsletter editor</i>	Susan Dunnell	301-949-1514	dunnz@erols.com
<i>Program Coordinators</i>	Sallye Mahan-Cox Nancy Hannans	301-330-1963 703-655-7415	smahancox@yahoo.com nancyhannans@gmail.com
<i>Communications</i>	Eric Goss	301-956-3099	edg16@hotmail.com
<i>Open Shows</i>	Diane Jeang	301-871-1589	swinedoc@yahoo.com
<i>Glenview Member Shows</i>	Diane Jeang	301-871-1589	swinedoc@yahoo.com
<i>Historian</i>	Patria Baranski	301-424-6193	geowell7@hotmail.com
<i>Hospitality</i>	Martha Campos	301-251-0643	ximenace@verizon.net
<i>Webmaster</i>	Michael Auger	202-670-2789	RAL@arty4ever.com
<i>Founder, Honorary Lifetime Member</i>	Eileen Mader	301-762-6458	
