

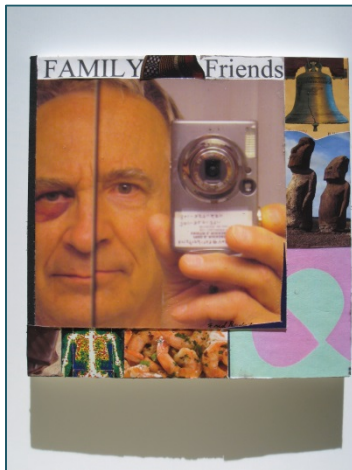


RockvilleArtLeague.org Vol. XXIV No. 3 November 2014

NEXT MEETING – NOVEMBER 6th, 6:30 PM
Making Ipad/Iphone Art for Holiday Ornaments

Message from the President Fred Ruckdeschel

Dear fellow artists and art lovers,



Exhibiting our art work can be a heady experience. How pleasing to let others enjoy our art. And how wonderful to get the feedback and make a sale or two. An important function of RAL is to sponsor

exhibitions of your art. Recent boards have increasingly focused on RAL sponsoring one-time shows at venues other than at the Mansion or at the RAL regular Open Show venues listed in the Newsletter. Nadia Azumi brought these venues to the board and has additional potential venues to develop as member interest and volunteers allow.

The first of these shows is currently at Brookside Gardens. It will be closing November 2. Stop by to see the RAL art and

the lovely, nationally known gardens that the County maintains there.

Another show will be at Pepco's Edison Place Gallery in downtown DC. It is titled, "Rock Solid: The work of RAL," and will run from November 10 to December 19.

Of course, the December semi-annual members' show in the Mansion is almost upon us. The entry form was published in the October Newsletter on page 4 and is available on RAL's website. The form will also be available at the Mansion when art is delivered for jurying.

Additional opportunities for showing our work are these below, and I encourage everyone to seriously consider making use of them.

Members also exhibit their work in the two conference rooms on the second floor of the Mansion. Emily Pearce, RAL secretary, and Julie Farrell, Director of the Glenview Mansion Art Gallery, have drawn up the guidelines to assist members who choose to have a show in these rooms. Right now, Eric Goss is exhibiting his work in both rooms until October 27. In November, members Emily Pearce and Regina Price will be showing there. *The new Guidelines for exhibiting in the conference*

rooms are available on the RAL website in the "Exhibits" section. The RAL coordinator for these shows is board member Diane Jeang.

Members may also apply to the Mansion to show work in its main exhibition rooms. Elaine Cafritz is currently showing there until October 24. These shows; however, are not sponsored by RAL. Mansion staff chooses from among those applying.

Finally, there is the RAL Ongoing Show List near the end of each Newsletter. The contacts for these shows are included in the list. Please do think about taking advantage of those opportunities. In addition to the pleasure of showing your work, they can enhance to your resume and might generate sales of your work there or in the future.

Fred Ruckdeschel – President, RAL

November Meeting: Making Tree Ornaments

At our October meeting, painter Ariel Klein provided an overview of iPad painting. He demonstrated two popular iPad painting applications, Adobe Ideas and Procreate. At our November meeting we will use these applications to create art that will be printed on ornaments for the holiday RAL tree at Glen View Mansion. Sample of iPhone art below.



REMINDER—Please Pay Dues!

Please remember to pay your dues of \$35 (9/1/2014 through 8/31/2015.) **by Oct. 31.** If you pay **after October 31**, dues are \$40 and you can wait to pay when registering for the December members' show.



Thank you! Susan

December 2014 Member Art Show

December 7, 2014 – January 2, 2015

Judge: Gonzalo Ruiz Navarro will be our juror for the December Member Show. Originally from Spain, he is now a Washington area landscape painter and portrait artist. He teaches at The Yellow Barn Studio, Washington Artworks and The Griffin Art Center. He is also the Art Committee Chair at the International Monetary Fund. He will conduct a gallery walk-through on Thursday, December 4, at 6:30 PM

Eligibility and rules: Each member in good standing may enter two works. The maximum length of any framed side is 60 inches. Only **original** works securely framed with hanging wire are acceptable. The entries must have been completed within the last two years and may not have been exhibited previously in a RAL Member Show. No photographs, no reproductions, no giclées and no wet canvases are allowed. A work having multiple framed parts must meet the two works per member criteria. Entries not meeting the

show conditions will not be accepted. RAL retains the right to determine suitability of work for entry in this show. Artist's signature on the Show Agreement also constitutes a commitment to donate 20% of the sale price to the City of Rockville for works sold during the show.

Categories:

- Oils and acrylics
- Watercolors
- Pastels, drawings, and hand pulled prints
- Mixed media, collage, experimental, and original computer-generated art
- Sculpture and ceramics

Awards:

- Best in Show (cash and ribbon)
- First, Second and Third in all categories (cash and ribbons)
- Honorable Mention at the judge's discretion (ribbons)

Delivery: Tuesday, December 2, Noon - 2 PM and 5 - 7 PM. Register and deliver your work to the second floor Glenview Mansion Art Gallery, Rockville Civic Center. On Wednesday, December 3, please phone the pickup hotline after 2 PM, **240-314-8682**, to see if your work was juried into the show. If your number is listed then you or your designee must pick up your work on Thursday, December 4, Noon -2:00 PM and 5:00 - 7:00 PM.

Gallery Walk Through: Thursday, December 4, at 6:30 PM.

Reception: Sunday, December 7, from 1:30-3:30 PM. Presentation of awards at 2 PM. Light refreshments to follow.

Final Pick Up: Monday, January 5, 2015, Noon - 2 PM and 5-7 PM. Your work must be picked up. Please have your designee pick up your work if necessary. Any work left after Wednesday noon will not be insured. There is no storage available.

Sales: The Glenview Mansion staff will manage art sales. Artist's signature on the Show Agreement also constitutes a commitment to donate 20% of the sale price to the City of Rockville for works sold during the show.

We need volunteers to help register, move, hang, type, and release entries. Please check your schedules and volunteer. It takes a lot of manpower to put this show together. The \$5 entry fee will be waived if you volunteer for the December show.

Tuesday, December 2	Noon-2PM	register work
Tuesday, December 2	5-7PM	register work
Wednesday, Dec.3	9-noon	move artwork
Thursday, Dec. 4	9-11:00	hang art
Thursday, Dec. 4	2:00-4:00	hang art
Thursday, Dec. 4	Noon-2	call winners, write ribbons
Thursday, Dec. 4	Noon-2	pick-up of unaccepted artwork
Thursday, Dec. 4	5:00-7:00	pick-up of unaccepted artwork
Sunday, Dec. 7	1:30-3:30	Reception
Helpers		
Monday, January 5	Noon-2	final pickup of artwork
Monday, January 5	5-7PM	final pickup of artwork

All of the time slots are two hour shifts, except on Wednesday. Sign up for as many as you can. Any amount of time that you can contribute, even if it's less, helps to make sure that the show happens. Please check your calendar! A sign-up sheet will be passed around at the November meeting.

If you have any questions or concerns, please call Emily Pearce at 919-699-2547 or email at ekepearce@gmail.com.

Critique by Penny Kritt

The Colors of Fall

It's that time of year when we are surrounded by the glorious colors of leaves before they leap off the trees. They have reds, the oranges, the yellows, but most standard paints don't capture what nature displays. Here are some pointers on how to *really* paint what you see.

Colors and Pigments:

You see the brilliant reds, yellows and oranges in *Figure 1* below. But upon closer inspection, the colors aren't true primary or secondary colors. The reds aren't *pure* red, and the same is true for the yellows and oranges. Almost all the colors are tertiary, meaning that they have elements of red, yellow and *blue!* There will be a small amount of

blue, and you'll find that you can't accurately match the colors you see unless you use a red or yellow paint that has some blue in it! For example, if you use rose or alizarin crimson, they each have blue pigments along with red ones, so any yellow will work. But if you start with a coral (a mixture of red and yellow pigments), you'll need a lemon yellow. Lemon yellow has a little blue in it! On the other hand, Hansa yellow only has a little red, so using it with coral will make your mixture too intense, so adding something with blue in it as shown below will solve the problem.



Figure 1

The colors of fall aren't so dazzling because they are pure colors. It's because they have lots of red in almost all the color variations! Even yellow leaves will have a fair amount of red in them, and orange ones have even more. Humans are designed to notice the color of red – in all its variations – first and more than any other color. That's why stop signs, tail lights on cars and traffic lights are red. We're programmed to see that color immediately and react – strongly -- to it.

In *Figure 2* below, I've added some additional color swatches. You might have thought the colors were very intense (made from one or two primary colors, usually red and yellow). But they are actually tertiary, which means that they also have some percentage of *blue* in each color. If you compare the tree colors to the intense samples below, you

can see that the colors in the photo are actually muted – because each mixture has some blue in it.



Figure 2

Which blue works best? Experiment with what's on your palette! Any color with blue in it might make a wonderful variation.



Figure 3



Figure 4

In *Figure 3* above, cerulean or manganese blue each have a large yellow component along with their blue pigment. By contrast, the French ultramarine blue shown in *Figure 4* only has blue and red pigments.

You'll usually only need to add a little bit of any of these colors to any paint that's red or yellow. That will tone it down just enough.

Or get brave and try another paint that has some blue in it! Here are some examples. Try any paint that's mostly red or yellow with any other paint that is mostly blue. *Figures 5 and 6* will give you some ideas of where to start.

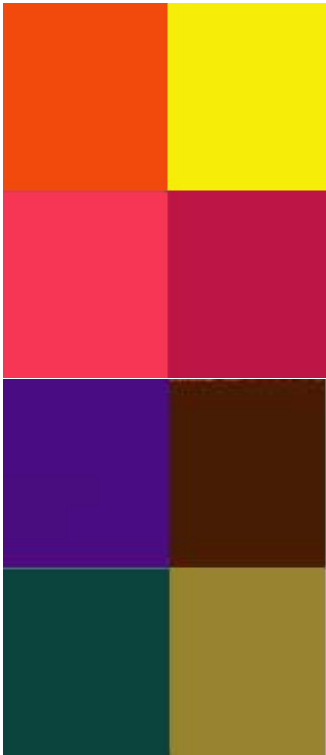


Figure 5

Figure 6

MUD:

How did those lovely colors turn to thick, ugly mud on your palette? If you mix any colors on your palette or paper and they just turn into an ugly brown or gray mess, it's because you are using opaque colors! If you use transparent colors, you might get some interesting browns or grays, but they will never look dull and chalky.

Tip: Artist grade paints usually have a label on the tube that will tell you if that mixture is transparent, opaque or a semi-. Usually, when people think of watercolors, they imagine colors that are like looking through a piece of colored cellophane, that let the paper glow from underneath. That's the look you get with transparent and semi-transparent paint.

Opaque paints, sometimes labeled as "gouache", have chalk in them. That allows them to completely cover up whatever was below, both the white of the paper and also any other paint that was there. Mixing three opaque colors will almost always make gray or brown mud. Sometimes, even two colors can cause this problem. You can thin opaque paints with water to make them more transparent, but that will also give you a lighter value than you may want.

The good news is that you can mix both transparent and opaque colors! Maybe that will prevent your mud!

Trunks and branches:

As kids, we always used a brown crayon for the wooden parts of trees. As observant artists, however, you can see that trunks and branches are usually gray! Oaks are darker grays, birches are light with a hint of beige. Sycamores have beige and gray-green patches. But brown? Nope!

Tip:

Paint "branch shapes" and the trunk separately to avoid that "lollipop" look. Remember to leave "sky holes" both around the perimeter of the tree and inside the leaf canopy.

If you would like a critique, please email a photo to me at pennykritt@aol.com. Perhaps your work will be chosen for the next issue.

For more information on painting trees, I invite you to attend my class called "Painting Autumn with Kritt". The listing for the class is in this newsletter.

If you would like a critique, please email a photo to me at pennykritt@aol.com. Perhaps your work will be chosen for the next issue.

**For classes or private lessons, contact Penny at
301/989-1799
©Penny Kritt 2013**

MEMBER NEWS

Rockville Art League members doing live demonstrations in Rockville Town Square on September 20, special thanks to: **Noble Adler** and **Sue Moses**.



Pepco Edison Place Gallery Member Show

What an exciting opportunity for participating RAL members! RAL will be exhibiting at the Pepco Edison Place Gallery, 702 Eighth Street, NW Washington, DC, from November 11 thru December 18, 2014. The opening reception is Friday, November 21, 6:00 – 8:30PM. All are invited to come support your fellow friends and artists. Gallery hours are Tuesday thru Friday, 12 Noon to 4 PM. Participating artists deliver their artwork on Monday, November 10, 10:00AM and pick up artwork on Friday, December 19, 10:00AM. Postcards will be available at the general November meeting or contact Marian MacKerer (mackerer@comcast.net) to receive yours for mailing to friends and clients. Annual dues (\$35 before Nov. 1) and entry fee (\$20) are due for participating artists.

RAL Brookside Show Ends Nov. 2, 2014

You still have time to visit Brookside Garden to view the RAL members show! Participating artists must pick up their artwork on Monday, November 3, 2014 at 9:00AM. Shuttle service will be available the same as drop off.



Lieta Gerson's, "A Medley of Colors," exhibit will be shown at the Thomas Farm Community Center, 700 Falls Grove Drive, Rockville, MD through November 18, 2014.

Lois Levitan will be exhibiting her most recent sculptures at The Glenview Gallery from November 2nd through November 26th. All are invited to the opening reception to be held Sunday, November 2nd from 1:30 - 3:30 p.m. A painter and photographer will also be represented at the exhibit.

Merry Lymn has a one-person show at the Bethesda library October 1-31, 2014.



The Daigoji Five Story Pagoda built in Kyoto, Japan in 1348 AD.

Patricia Zannie, RAL Treasurer, and nine of her students, Fetunwork Amedie, Cynthia F. Johnson, Julie Kaplan, Amy Kincaid, Judi Leary, JoAnn Morris, Lezetta Moyer, **Fred Ruckdeschel**, RAL President, and Patricia Sagawa are exhibiting 60 pieces of their artwork through November 30th in a show entitled “Zen Adventures in Collage.”

They follow in the footsteps of “Edo” era Japanese Woodblock Print Masters, as well as the Western Impressionists and Post Impressionists who adopted and adapted Zen aesthetics and concepts of design. They explore their own creative, individual styles for expressing their personal artistic visions, using modern concepts of design as well as those from the past.

Their artworks run the gamut from representational to abstract, using both vibrant and subtle palettes.

Some art pieces are mixed media, with drawings on top of glued down papers, using various inks, wax, oil pastels, etc. Found objects also find their way into some compositions, while other artworks are primarily painted or made of fabrics. The

world and everything in it is “fair game” for their artworks.

They use handmade, commercial, origami and Lakota papers from around the world. Many works include images from contemporary magazines, photographs and “treasures” from adventures and life they have shared with people and cultures from other continents of the globe.

The exhibition runs through November 30th, 2014 at Unitarian Universalist Congregation of Rockville, 100 Welsh Park Drive, Rockville, MD 20850. The exhibit is open to the public between 9:30 and 4:30 daily. For additional information phone 301-762-7666 or check the website: www.uucr.org

Martha Campos will have five paintings exhibited at the Inter-American Development Bank’s special Art Club exhibit. Details below.

The IDB Staff Association
is pleased to invite you to

**SPECIAL IDB-IIC ART CLUB EXHIBIT:
MORE THAN 30 YEARS OF TALENT AND CREATIVITY**
Sponsored by the IDB Staff Association

On Wednesday, October 22, 2014 at 6:00pm in the Atrium of the
Inter-American Development Bank

1300 New York Avenue, NW • (202) 623-2217

The exhibit will remain on display and open to the public until the afternoon of
Wednesday October 29, 2014
Open Weekdays 10:00am to 6:00pm - No IDB parking available
Travel by metro is recommended - The closest metro stop is Metro Center
Please present this invitation and photo identification to be admitted to the opening.



Do you have an upcoming show? Or an event that RAL members might enjoy attending? Please send an email to the newsletter editor! dunnz@erols.com.

ART CLASSES

Painting Autumn classes at the Kritt Studio offered through Montgomery County Recreation Dept. Morning (No. 390522) and evening (No. 390523) 5 sessions start Tuesday, 11/11. For more information, call Penny Kritt at 301/989-1799.

Nadia Azumi, local chapter president of Silk Painters International for MD, VA, and DC, holds meetings, workshops and classes in silk painting at her residence in Rockville. For more information please contact her at: nadia@nadiasilk.com

ART OPPORTUNITIES

Delaplaine Visual Art Education Center Call for Entries. The Delaplaine Visual Art Education Center is scheduling solo and small group exhibit opportunities for 2014-2015 in five galleries housed in a historic art center in downtown Frederick. Open to all media. https://www.delaplaine.org/site/?utm_source=PROJECTOR+6-27-13&utm_campaign=Projector&utm_medium=email

Eligibility: Open; **Deadline:** Ongoing
Entry Fee: \$30 fee for non-members

Northern Virginia Art Center's new Specials Exhibitions space. The Northern Virginia Art Center is searching for talented professional artists with a cohesive body of work to exhibit in their new Special Exhibitions space in the heart of Crystal City's thriving restaurant district. 380 square feet of gleaming exhibition space available for monthly exhibits of 2D or 3D art! Their full time gallery staff will assist in exhibit installation, process sales of your work, and will coordinate your opening

reception, all for a small fee and low sales commission.

Eligibility: Open; **Deadline:** Ongoing
Entry Fee: N/A

http://novaartcenter.org/our-mission/show-opportunities/?utm_source=PROJECTOR%206-27-13&utm_campaign=Projector&utm_medium=email

Rockville Innovation Center Call for Entries

Rockville Innovation Center is interested in showcasing the work of local artists in their gorgeous location. The RIC is looking to fill its beautiful space with artwork by metro area artists and photographers.

<http://www.visartsatrockville.org/call-for-entries/feast>

Eligibility: Open; **Deadline:** Ongoing
Entry Fee: N/A

Montpelier Arts Center. Artists interested in exhibiting in the Main Gallery or curators who want to propose an exhibition should send a one page proposal, resume(s), and a CD of no fewer than 20 images to Main Gallery, Montpelier Arts Center, 9652 Muirkirk Road, Laurel, MD 20708.

http://arts.pgparcs.com/Community_Arts_Services/Artist_Resources.htm?utm_source=PROJECTOR+6-27-13&utm_campaign=Projector&utm_medium=email

Eligibility: Open; **Deadline:** Ongoing
Entry Fee: N/A

DC Photo Grid. The DC Photo Grid is an aggregated map of the city generated from user-submitted photographs, and the DC Crowd-Sourced Video Project offers a constantly looping portrait of the city as viewed by its inhabitants.

http://www.dcphtogrid.com/?utm_source=PROJECTOR+6-27-13&utm_campaign=Projector&utm_medium=email

Eligibility: Open; **Deadline:** Ongoing/**Entry Fee:** N/A

GLENVIEW MANSION CONFERENCE ROOM SHOWS

You can show your artwork in Glenview Mansion for one month if you have received a 1st, 2nd, 3rd or honorable mention award in an RAL juried show. Starting in 2013, artists may have both rooms to exhibit in if a second artist doesn't sign up for the same month within two months of the show's start date; otherwise they will have one room. The receptions at Glenview mansion are 1:30-3:30 pm, on the Sunday after hanging! Preferred drop-off and pick-up times for Glenview Shows are from 9 am to 12 noon. Note: please contact the mansion management ahead of time if you wish to modify the drop-off or pick-up times.

For artwork delivery at the Glenview Mansion, please be prepared to unwrap your work and take the wrappings with you - there is no room to store packing materials at the Mansion. Please bring pliers (needle nose are easy to work with). There is no one to help move artwork from your vehicle to the conference rooms, however, you may use the hand truck that is at the Mansion. You are responsible for hanging your own artwork with help from the Mansion staff. If you have not made labels for your work, please fill out the RAL cards that will be available when you bring your work to the conference room. If you print your own, they should be on card stock. Please do not use the sticky Avery labels, unless you adhere them to foam core or card stock.

If you are unavailable on the appropriate date for pickup, please arrange with someone to pickup for you. There is no room to store your artwork at the Mansion after it comes down.

Please note that in 2014, drop off/pickup switches from Wednesdays to Mondays (unless Monday is a holiday).

Thanks - please contact Julie Farrell, Arts Programs Specialist at Glenview, with any questions. jfarrell@rockvillemd.gov.

If you need to contact Julie Farrell, please send an email to jfarrell@rockvillemd.gov Please be aware that is no staff at the mansion available to help you move your artwork into the conference rooms and if you need assistance, you need to assist yourself! Or ask a friend to help you, or contact Julie about hiring a mover.

2014			
	Drop off	Reception	Pickup
November	Oct 27	Nov 2	Dec 1
December	Dec 1	Dec 7	Jan 5

Monday delivery and hanging: 9AM–12PM
Sunday Gallery Opening: 1:30—3:30PM
Wednesday Pickup: 9AM—12PM

Nov. 2014: Emily Pearce and Regina Price
Dec. 2014: RAL Members' Winter Show

Jan. 2015:

Feb. 2015: Jorge Bernal (2)

March 2015: Student Art Show

April 2015:

May 2015: RAL Members' Spring Show

Glenview/Open Show Coordinator: Diane Jeang, (301) 871-1589 E-mail: swinedoc@yahoo.com

RAL ONGOING SHOW LIST

Bank of America - 3200 Sandy Spring Road, Olney, Maryland

10-12 paintings, Contact: (301) 232-1370

Twinbrook Library - 202 Meadow Hall Drive, Rockville, Maryland

Shows are now 1 month in length. 5 medium to large paintings, Contact person: Chris Lindy (240)-777-0240, christinelundy@montgomerycountymd.gov

Rockville Community Services Office - 30 Courthouse Square Rockville, Maryland

10-12 medium to large paintings, Contact person: Carlos Aparicio (240) 314-8303

Leita Gerson

Aug. 15, 2014 Oct. 15, 2014

Thomas Farm Community Center – 700 Falls Grove Drive, Rockville, Maryland

12-16 medium to large paintings, Contact person: Martha Coester (240) 314-8842

Valthea Fry (301) 926-7084

Oct. 15, 2014-Dec. 15, 2014

Marilyn J. Praisner Library – 14910 Old Columbia Road, Burtonsville, Maryland

10 small to medium or 5-6 large paintings (10 hanging chains), Contact person: Vera Ramaty (240) 773-9455

RAL BOARD OF DIRECTORS

<u>Position</u>	<u>Name</u>	<u>Phone</u>	<u>e-mail</u>
President:	Fred Ruckdeschel	301-320-3911	fred.ruckdeschel.and.art@gmail.com
1st VP:	VACANT		
Treasurer	Patricia Zannie	301-962-8581	patriciacollages@yahoo.com
Secretary	Emily Pearce	919-699-2547	ekepearce@gmail.com
Membership	Susan Dunnell	301-949-1514	dunnz@erols.com
Show Coordinator	Diane Jeang	301-871-1589	swinedoc@yahoo.com
Publicity/mkt.	Nadia Azumi	301-538-0062	nadia@nadiasilk.com
Newsletter editor	Susan Dunnell	301-949-1514	dunnz@erols.com
Program coordinator	Liliane Blom	301-518-5312	lilianeblom@aol.com
E-mail blasts	Eric Goss	301-956-3099	edg16@hotmail.com
Open shows	Diane Jeang	301-871-1589	swinedoc@yahoo.com
Glenview member shows	Diane Jeang	301-871-1589	swinedoc@yahoo.com
Hospitality	Martha Campos	301-266-4670	ximenace@verizon.net
Historian	Patria Baranski	301-424-6193	
Web master	Michael Auger	202-670-2789	RAL@arty4ever.com
Founder, Hon. lifetime member	Eileen Mader	301-762-6458	

