



RockvilleArtLeague.org Vol. XXIII No. 6 February 2014

NEXT MEETING – FEBRUARY 6th
“Pastel Progressions,” Noble (Speaker), at 6:30 PM

MESSAGE FROM THE PRESIDENT

LILIANE BLOM

Dear fellow artists and art lovers,

We will start our February meeting by distributing the awards to those of you who



because of the weather were not able to make our December show opening. This will be followed by a talk on pastels by our very own Noble. All in all it should be a fun and festive meeting. If you have any specific pastel questions about work you have done feel free to bring your pieces to get Noble's always straightforward and useful suggestions.

As always, please don't forget to update us on what you are doing, either by submitting your upcoming shows and events to our wonderful newsletter editor, Susan Dunnell, at dunnz@erols.com or on our Facebook page (<https://www.facebook.com/RockvilleArtLeague>), or both!

Looking forward to seeing you on February 6th.

Liliane Blom – President, RAL

February's Presentation: Pastel Progressions with Underpainting

The talk will demonstrate a method Noble uses with pastel for preparing surfaces with underpainting, contributing to its final look (portraits are a primary theme).

...About Our Speaker, NOBLE



Born in 1963 in Silver Spring, MD, Noble is an engineering consultant whose lifelong love of art finally caught up with him at the dawn of the 21st century. He was drawn to figurative art largely driven by his congenital hip condition that was fundamental to his relationship with physicality and observation of the body, as well as psychological factors of the inner vs. outer self.

Noble is primarily a self-taught painter from books and videos with a traditional focus, as well as having taken a few random classes from some excellent artists. His inspiration comes from late 19th Century French and Russian schools as well as mid-20th Century abstract expressionists. As a bi-modal painter, his work is split between the representational figurative and the non-objective; the former being more subject oriented and latter more process oriented. His work focuses on a mood driven aesthetic respecting, in his words, the “delicious imperfection of humanity.”

Aside from receiving numerous awards, Noble’s work is in private art collections throughout the United States and Australia. He is a member of the Rockville Art League (webmaster), the Montgomery Art Association and the Montgomery Country Plein Air Painters Association. He currently lives and works in Silver Spring, MD.

VOLUNTEERS NEEDED for 2014 STUDENT ART SHOW!

As in years past, the Rockville Art League and the City of Rockville co-sponsor the annual Rockville Student Art Show. Many volunteers are needed to make this a success. We have many positions to fill. As you can see from the list below there are many different jobs, very similar to our own member show. Volunteering for this show will waive the \$5.00 entry fee for the May member show. If you are interested please contact me at 301-590-9437, or mackerer@comcast.net.

Thank you, Marian MacKerer

Volunteer jobs available:

Sunday, February 23, 1:30-3:30

10 volunteers to register artwork

Sunday, February 23, 3:45pm-5:30

2 Judges (art teachers)

Sunday, February 23, 5:00-6:00

2 volunteers to consolidate work to 2nd floor

Tues., February 25, 10-Noon

4 volunteers to hang artworks and proof program

Tues., February 25, 2-4

4 volunteers to hang artworks and proof program

Wed., February 26, 10-Noon

4 volunteers to hang, and write certificates/ribbons

Wed., February 26, 2 to 4 p.m.

4 volunteers to hang, and write certificates/ribbons

Thurs, Feb 27, 10-Noon

2 volunteers for tagging artwork

Sun., March 2, 1:30 – 3:30 p.m.

2 volunteers to assist in presenting ribbon awards and certificates of participation

Thurs., March 20, 3-5 p.m.

2 volunteers to oversee pick-up of artworks

Thurs., March 20, 5- 7 p.m.

2 volunteers to oversee pick-up of artworks

Critique by Penny Kritt

Shadows

If *you* would like a critique, please email a photo to me at pennykritt@aol.com. Perhaps your work will be chosen for the next issue.

One of the most obvious elements of “seeing like an artist” comes from looking at shadows. They come in different values, shapes, sizes and colors. If you haven’t looked at shadows lately, check out the ones that are in the room with you now as well as the ones that are outside. Shadows are among the artist’s most useful tools.

Shadow Values (light, midtone and dark)

First, let’s look at a shadow on a sunny day.



On a bright day, the shadow will be darkest close to the object that casts the shadow and it will get lighter as it moves farther away. Also, the edges will be less distinct as the shadow gets farther from the object. The tree on the left creates a shadow across the road that gets lighter and less distinct as it moves to the right.

Also, most people tend to think of the road surface as black or something almost as dark. At least in this area of the country, our roads tend to be a mid-tone gray, and on a sunny day, the shadows on the road are much darker.

If you want to show an object in early morning light or on an overcast day, the value contrast (light vs. dark) will be much less. As you can see in the photo below, it also works for foggy or misty conditions.



Now you have a way to tell the viewer the time of day and/or weather conditions!

Shadow Shapes and Sizes

As the sun or other light source moves in relation to an object, the shadow shape also changes. In the early morning and near sunset, the shadows are

very long. At noon or under an overhead light, the shadow will be very dark and right under the object.

Take any object and sit it on a sunny window sill in the morning. Try to check it once an hour. In the morning, the shadow will get shorter until around noon and will be on one side of the object. In the afternoon, the shadow will start to get longer and move around to the other side of the object.

Tip:

For landscape artists, make sure that all your shadows are on the same side and of similar shapes. If you're doing a still life, the same applies unless *you show the viewer* that there is another light source.

Shadow Colors

Start looking closely at shadows and you'll see that they are all sorts of colors.

In the two winter scene photos below, the shadows are aqua to show daytime and then purple on the second photo to show late afternoon.



It's no surprise then that the shadows are on the cool (green/blue/purple) side of the color wheel.

But if you paint a summer beach scene or a bunch of daffodils, your shadow colors should come from the warm (orange/red/yellow) side of the color wheel. In the photo below, the shadows are a warm brown, somewhere between milk and dark chocolate color. (I threw that term in to make it easy to remember!)



If you paint portraits, most, if not all, of the shadows on the face should be a “hot dark” with a red base. You can use cool shadows on the body or from the eyebrows up where there is just bone under the flesh.

Tip:

Here’s Diana, one of my favorite subjects. The top portrait has black in the shadows between her lips and in the nostrils. It looks like she’s been eating licorice.



In the version below, she looks healthier.

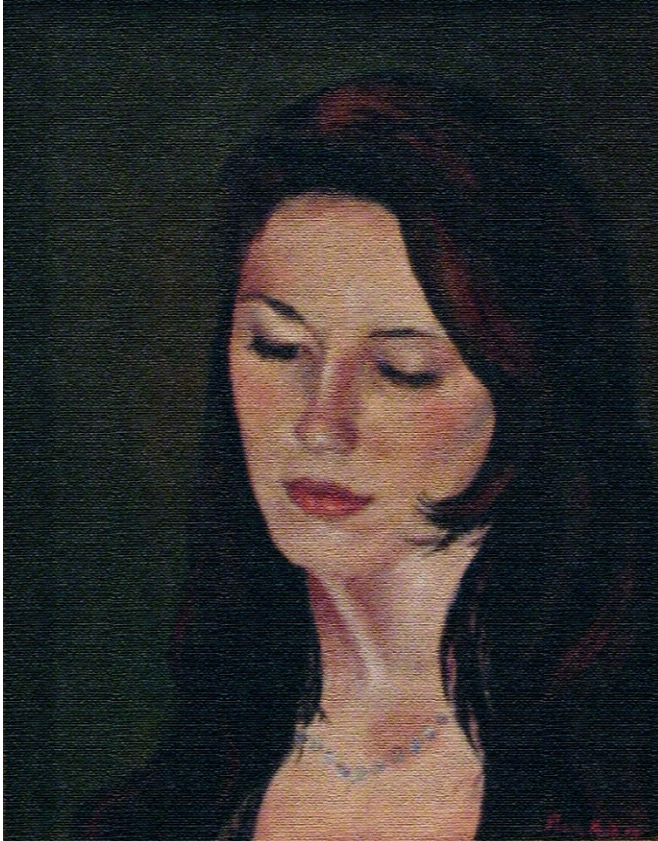


You can mix a “hot dark” by using red and burnt umber. Daniel Smith also makes a color called “quinacridone burnt scarlet” that’s just perfect for the darkest facial shadow, right out of the tube. They make this color in their watercolor, acrylic and oil product lines. Use it full strength between the lips and in the nostrils or lighten it to do shadows under the chin and elsewhere on the face.

Of course, there are times that you can take a little artistic license. In the painting below the face is

large enough that it would be boring to use the same color (in appropriate values) for all the shadows.

On her right cheek, I've used an aqua to emphasize the shadow below her high cheek bone. Under her chin, a red purple is a cooler version of the color I used on her forehead over her left eyebrow.



McKenzie
Oil on Canvas
18 x 24 inches
By Penny Krittr

So experiment with shadow colors and if you're sure the value is right, then change the temperature and see if that works better.

Tip:

Never use brown or gray for a shadow on the face. It will look like the person needs a shave.

For classes or private lessons, contact Penny at 301/989-1799

©Penny Krittr 2013

BARTER BIN

If anyone knows of or has any storage space for my framed prints please let me know. Right now I have to put my prints into public storage and that can add up to an expense.

I am willing to pay a minimum fee for your help if you have any space.

Please contact: Laura Chassy (301)589-8058; Laura.Chassy@yahoo.com.

MEMBER NEWS

Do you have an upcoming show? Or an event that RAL members might enjoy attending?

Please send an email to the newsletter editor! dunnz@erols.com.

ART CLASSES

SPRING 2014 FINE ART CLASSES

with Patricia Zannie

www.patzannie.com

collagesbypatricia@yahoo.com

Patricia Zannie will be teaching four Fine Art Spring 2014 Classes at the School of Art and Design in Montgomery College at the Cafritz Art Center in Silver Spring. To register for a class, go to the MC website (www.montgomerycollege.edu); go to Workforce Development and Continuing Education and then go to Register. Under "Art & Design" and click on any of the following classes:

ADS371: Creative Composition I: Principles of Composition

Effective composition is an essential requirement for all artists and designers whether one is a painter or a multimedia designer. The instructor will use the work of master western artists to illustrate design concepts and how they were applied in highly regarded works of art. Works of master

Japanese woodblock printmakers of the 16th - 18th centuries will be utilized in comparison. Through the use of collage, you will then develop your own original artwork based on an increased knowledge of the principles of composition in both the West and the East. You will have the concepts to increase the visual impact of your own artwork utilizing the medium of collage. Some supplies are provided.

Tuition waiver applies; seniors pay fee only.

\$147.00 + \$72.00 Fee = \$219.00; Non-Md

Residents: Add \$140.00

Takoma Park/Silver Spring

(CF) 234

09:00 AM - 12:00 PM

CRN#: 36213 Seven session(s) R

2/6/2014 - 3/27/2014 No class 3/20

ADS372: Creative Composition II: Techniques of Composition

Both fine artists and designers in any creative profession must be able to utilize the techniques to create a good composition. Egyptian paintings and the works of Andy Warhol both were created using the same "grid" as an underlying structure employing design concepts such as similarity, repetition, pattern and variety for recognition, interest, and contrast. You will study a variety of techniques developed by artists long ago as well as modern artists who are working today. Using collage, you will create well-composed original artworks based on the techniques presented in class. Some supplies are provided.

Tuition waiver applies; seniors pay fee only.

\$147.00 + \$72.00 Fee = \$219.00; Non-Md

Residents: Add \$140.00

Takoma Park/Silver Spring

(CF) 234

09:00 AM - 12:00 PM

CRN#: 36214 Seven session(s) R

4/3/2014 - 5/15/2014

ADS126: Light and Landscape

Using artwork from the masters and

contemporary artists as a resource, you will develop a meaningful understanding of how both natural and artificial light affect perception and the illusion of three-dimensional objects. Techniques explored include collage, size, contour, composition, and perspective in both landscapes and cityscapes. This is an excellent class for both new and practicing artists. Bring rubber cement, scissors, and a small box of oil pastels to the first class.

\$130.00 + \$70.00 Fee = \$200.00; Non-Md

Residents: Add \$140.00

Takoma Park/Silver Spring

(CF) 234

09:00 AM - 12:00 PM

CRN#: 36307 Seven session(s) R

2/11/2014 - 4/1/2014 No class 3/18

ADS354: Abstraction: From Nature to Two-Dimensional Design

After learning the abstraction techniques developed by modern masters such as Cezanne, Gauguin, Matisse, and Picasso you will utilize elements of design to simplify the lines, shapes, colors, and values of a 3-dimensional object and transform them into a cohesive 2-dimensional composition. You will use collage and mixed media techniques to create original artwork based on an analysis of the 3-dimensional object and abstracting its essential meaning and components into a two-dimensional design. Bring rubber cement, scissors, and oil pastels to the first class. Some art supplies will be provided.

Tuition waiver applies; seniors pay fee only.

\$130.00 + \$70.00 Fee = \$200.00; Non-Md

Residents: Add \$140.00

Takoma Park/Silver Spring

(CF) 234 09:00 AM - 12:00 PM

CRN#: 36212 Seven session(s) T

4/8/2014 - 5/20/2014

For assistance or additional information call Belva Hill at 240-567-5821 or email her at: Belva.Hill@montgomerycollege.edu or contact Customer Service at 240-567-5188.

Penny Kritt at Plaza Art in Rockville: (new location at 1776 E. Jefferson St. #119 in Rockville, behind Federal Plaza). Telephone • 301-770-0500

At Columbia Art Center
6100 Foreland Garth • Columbia, MD • 21045
Telephone • 410-730-0075

Nadia Azumi, local chapter president of Silk Painters International for MD, VA, and DC, holds meetings, workshops and classes in silk painting at her residence in Rockville. For more information please contact her at: nadia@nadiasilk.com

ART OPPORTUNITIES

CAPITOL ARTS NETWORK IN ROCKVILLE

Rockville Art League members are invited to join Capitol Arts Network's "Call for the Halls" for a two month exhibit at a discounted rate. Any RAL member may come by next week, Tuesday thru Friday, 10AM-4PM (they should call Judith Heartsong at 240-481-5034 before they come) to hang up to three pieces, up to four feet wide, on CAN's hanging system in the hallway art show. The work will hang until March 14th, and through the next two gallery openings (where CAN has 200-500 guests) *for a special discounted rate of \$35.*

Below are the featured listings this week in ProfessionalArtistMag.com for all of the newest opportunities.
<http://orders.professionalartistmag.com/adlisting/>

CALL FOR WATER MEDIA ENTRIES: The Baltimore Watercolor Society's Mid-Atlantic Exhibition at University of Maryland University College, Adelphi, MD, June 15 – August 24, 2014. Open to all watermedia artists in the Mid-Atlantic states and DC;

Juror: Linda Baker, AWS, NWS. Enter online or by CD. First place prize is \$1,200. Deadline **March 29, 2014.** For a prospectus and more information:

www.BaltimoreWatercolorSociety.org

Delaplaine Visual Art Education Center Call for Entries. The Delaplaine Visual Art Education Center is scheduling solo and small group exhibit opportunities for 2014-2015 in five galleries housed in a historic art center in downtown Frederick. Open to all media.

https://www.delaplaine.org/site/?utm_source=PROJECTOR+6-27-13&utm_campaign=Projector&utm_medium=email

Eligibility: Open; **Deadline:** Ongoing
Entry Fee: \$30 fee for non-members

Northern Virginia Art Center's new Specials Exhibitions space. The Northern Virginia Art Center is searching for talented professional artists with a cohesive body of work to exhibit in their new Special Exhibitions space in the heart of Crystal City's thriving restaurant district. 380 square feet of gleaming exhibition space available for monthly exhibits of 2D or 3D art! Their full time gallery staff will assist in exhibit installation, process sales of your work, and will coordinate your opening reception, all for a small fee and low sales commission.

Eligibility: Open; **Deadline:** Ongoing
Entry Fee: N/A

http://novaartcenter.org/our-mission/show-opportunities/?utm_source=PROJECTOR%206-27-13&utm_campaign=Projector&utm_medium=email

Rockville Innovation Center Call for Entries
Rockville Innovation Center is interested in showcasing the work of local artists in their gorgeous location. The RIC is looking to fill its beautiful space with artwork by metro area artists and photographers.

<http://www.visartsatrockville.org/call-for-entries/feast>

Eligibility: Open; **Deadline:** Ongoing

Entry Fee: N/A

Montpelier Arts Center. Artists interested in exhibiting in the Main Gallery or curators who want to propose an exhibition should send a one page proposal, resume(s), and a CD of no fewer than 20 images to Main Gallery, Montpelier Arts Center, 9652 Muirkirk Road, Laurel, MD 20708.

http://arts.pgparks.com/Community_Arts_Services/Artist_Resources.htm?utm_source=PROJECTOR+6-27-13&utm_campaign=Projector&utm_medium=email

Eligibility: Open; **Deadline:** Ongoing

Entry Fee: N/A

DC Photo Grid. The DC Photo Grid is an aggregated map of the city generated from user-submitted photographs, and the DC Crowd-Sourced Video Project offers a constantly looping portrait of the city as viewed by its inhabitants.

http://www.dcphtogrid.com/?utm_source=PROJECTOR+6-27-13&utm_campaign=Projector&utm_medium=email

Eligibility: Open; **Deadline:** Ongoing

Entry Fee: N/A

GLENVIEW MANSION CONFERENCE ROOM SHOWS

You can show your artwork in Glenview Mansion for one month if you have received a 1st, 2nd, 3rd or honorable mention award in an RAL juried show. Starting in 2013, artists may have both rooms to exhibit in if a second artist doesn't sign up for the same month within two months of the show's start date; otherwise they will have one room. The receptions at Glenview mansion are 1:30-3:30 pm, on the Sunday after hanging! Preferred drop-off and pick-up times for Glenview Shows are from 9 am to 12 noon. Note: please contact the mansion management ahead of time if you wish to modify the drop-off or pick-up times.

For artwork delivery at the Glenview Mansion, please be prepared to unwrap your work and take the wrappings with you - there is no room to store packing materials at the Mansion. Please bring pliers (needle nose are easy to work with). There is no one to help move artwork from your vehicle to the conference rooms, however, you may use the hand truck that is at the Mansion. You are responsible for hanging your own artwork with help from the Mansion staff. If you have not made labels for your work, please fill out the RAL cards that will be available when you bring your work to the conference room. If you print your own, they should be on card stock. Please do not use the sticky Avery labels, unless you adhere them to foam core or card stock.

If you are unavailable on the appropriate date for pickup, please arrange with someone to pickup for you. There is no room to store your artwork at the Mansion after it comes down.

Please note that in 2014, drop off/pickup switches from Wednesdays to Mondays (unless Monday is a holiday).

Thanks - please contact Julie Farrell, Arts Programs Specialist at Glenview, with any questions. jfarrell@rockvillemd.gov.

If you need to contact Julie Farrell, please send an email to jfarrell@rockvillemd.gov Please be aware that is no staff at the mansion available to help you move your artwork into the conference rooms and if you need assistance, you need to assist yourself! Or ask a friend to help you, or contact Julie about hiring a mover.

2014			
Feb	Jan 27	Feb 2	Feb 24
Mar	Student Art Show		
April	Mar 24	March 30	April 28
May	April 28	May 4	May 27
June	May 27	June 1	June 23
July	June 23	June 29	July 28
August	July 28	August 3	Sept 2
September	Sept 2	Sept 7	Sept 29

October	Sept 29	Oct 5	Oct 27
November	Oct 27	Nov 2	Dec 1
December	Dec 1	Dec 7	Jan 5

Monday delivery and hanging: 9AM–12PM

Sunday Gallery Opening: 1:30—3:30PM

Wednesday Pickup: 9AM—12PM

February 2014: Jorge Bernal (2)

March 2014: Rockville Student Show

April 2014: Carol Clatterbuck

May 2014: RAL Spring Show

June 2014: RAL Board Members' Show

July 2014: Diane Jeang

Aug. 2014: Open

Sept. 2014: Jackie Austin

Oct. 2014: Eric Gross

Nov. 2014: Open

Dec. 2014: RAL Winter Show

Glenview/Open Show Coordinator: Diane Jeang, (301) 871-1589 E-mail: swinedoc@yahoo.com

RAL ONGOING SHOW LIST

Bank of America - 3200 Sandy Spring Road, Olney, Maryland

10-12 paintings, Contact: (301) 232-1370

Twinbrook Library - 202 Meadow Hall Drive, Rockville, Maryland

Shows are now 1 month in length. 5 medium to large paintings, Contact person: Chris Lindy (240)-777-0240, christinelundy@montgomerycountymd.gov

Rockville Community Services Office - 30 Courthouse Square Rockville, Maryland

10-12 medium to large paintings, Contact person: Carlos Aparicio (240) 314-8303

Thomas Farm Community Center – 700 Falls Grove Drive, Rockville, Maryland

12-16 medium to large paintings, Contact person: Martha Coester (240) 314-8842

Carlos Garcia (240) 447-2893

Dec. 15, 2013 Feb. 15, 2014

Marilyn J. Praisner Library – 14910 Old Columbia Road, Burtonsville, Maryland

10 small to medium or 5-6 large paintings (10 hanging chains), Contact person: Vera Ramaty (240) 773-9455

RAL BOARD OF DIRECTORS

<u>Position</u>	<u>Name</u>	<u>Phone</u>	<u>e-mail</u>
President:	Liliane Blom	301-518-5312	lilianeblom@aol.com
1st VP/Show coordinator:	Marian Mackerer	301-590-9437	mackerer@comcast.net
Treasurer	Patricia Zannie	301-962-8581	patriciacollages@yahoo.com
Secretary	Fred Ruckdeshel	301-320-3911	krisfred1963@yahoo.com
Membership	Susan Dunnell	301-949-1514	dunnz@erols.com
Publicity/mkt.	Nadia Azumi	301-538-0062	nadia@nadiasilk.com
Newsletter editor	Susan Dunnell	301-949-1514	dunnz@erols.com
Program coordinator	Jorge Bernal	301-523-4141	jorgeluisbernal@gmail.com
Communications committee	VACANT		
Open shows	Diane Jeang	301-871-1589	swinedoc@yahoo.com
Glenview member shows	Diane Jeang	301-871-1589	swinedoc@yahoo.com
Hospitality	Martha Campos	301-266-4670	ximenace@verizon.net
Historian	Patria Baranski	301-424-6193	
Web master	Noble	301-661-2739	noble@artofnoble.com
Founder, Hon. lifetime member	Eileen Mader	301-762-6458	

