



RockvilleArtLeague.org Vol. XXII No. 2 October 2012

NEXT MEETING - THURSDAY, **October 4 at 7:30pm**

MESSAGE FROM THE PRESIDENT LILIANE BLOM

Dear fellow artists and art lovers,

We have some great news to share, RAL has been awarded a grant to continue our virtual tour for the December show from the Montgomery County Arts and Humanities Council and also been selected to be featured at the 2012 County Executive's Awards for



Excellence in the Arts and Humanities Awards on October 22nd. You can attend if you register, (the event is free) but you need a ticket, here is the link:

<http://2012execawards.eventbrite.com/>. Hope you can make it!

We would love to hear from more of you, on what you would like our organization to be, what it means to you and where we should be heading in the future. We have several things cooking for the next calendar year and would like more of our members to get involved. Next spring we will be spearheading a collaboration with Visarts. We are planning some workshops and would like to know what and who, that is, What kind of workshops would you like to attend, and who would you like as an instructor, do you have a workshop you would like to teach? Also we are planning open drawing sessions in Rockville town square for next spring, and are looking for members who would like to lead these sessions (and get paid for their instructional time), we would also like a few volunteers to assist the instructor.

The board reviewed the by-laws of RAL over the summer and the new revised ones will be posted to the website, as a PDF file, so all members can review them. A full membership vote on the new by-laws will be taken at the October meeting so you will have time to review them. Below please find the changes summarized for your convenience by Fred Ruckdeschel, our wonderful secretary.

I am looking for someone who would be interested in the position of President Elect, which means that you would work closely with me and be a president in training. I hope to hear from lots of you! Call me with your questions at:301-518-5312.

I had a meeting with the chair of the Montgomery College Rockville Campus Michael Farrell, he will stop by for a visit at our October meeting. I hope that all our members who have taken classes at MC will attend so they can have a chance to chat with the new chair. I would also like to remind everyone that there are many art events at the campus and three open drawing/painting groups that meet weekly starting in September. These are drop-ins and the fee ranges between \$6-\$9 depending on the number of attendees. You can find more info at:
<http://cms.montgomerycollege.edu/artrockville/weekendartgroups/>.

Hope to see you on October 4th!

Liliane Blom – President, RAL

OCTOBER MONTHLY MEETING
October 4 at 7:30 PM
KATIE DELL KAUFMAN,
SPEAKER

**Recommendations of the RAL Board for
Changes in the Bylaws**

The Board has reviewed the League's Bylaws. On the whole, they are well organized and for the most part clearly written. The Board has not attempted to make more readable those few passages that are not easy reading, although understandable.

The Board recommends the following five substantive changes to the Bylaws.

1. The primary recommended change is to provide for the president to have a term of two years in office. The Bylaws currently allow the president to serve one successive term. Accordingly a president could, *if re-elected*, serve four consecutive years. The Board favors a two-year term in order to allow the president time enough to acclimate to the position's responsibilities and then accomplish the goals that he or she and the Board set forth.
2. The second recommendation is to allow the Board or president flexibility in notifying members or the Board itself of information required to be communicated under the Bylaws. Accordingly, the Bylaws no longer would require notification by U.S. mail. The Board favors and recommends requiring only that the members or Board be “notified” of the information without specifying the manner of notification.

This will conform the Bylaws to RAL's current general practice, allow for various types of electronic communication as they are developed and become widely used (currently, of course, RAL uses email). For those providing the League only a postal address or phone number or both, notification would be by U.S. mail or the telephone.

3. The Board also recommends combining the named offices of the Corresponding Secretary and the Recording Secretary into a single office, that of the Secretary. There does not appear to be a need for both. Thus, two paragraphs describing the duties of the two officers will be modified to eliminate “Corresponding” and “Recording” and be combined under the office title of Secretary.
4. The Board also recommends changing the due date for payment of member’ dues from January 1 to September 1. This, of course, conforms with RAL’s current practice, which provides for the revenue to coincide with the start of RAL’s program year and the program's corresponding expenses.

5. Finally, the Board also recommends providing for the Treasurer to make a report to the membership either at the annual meeting or, now, in the issue of the Newsletter before the annual meeting.

The Board also decided on the following non-substantive “house-keeping” changes.

A. The Telephone Committee will now be called the COMMUNICATION COMMITTEE.

B. The membership chairman will provide the Board by December 31, with the names of members during the prior year who did not pay their dues for the current year. Currently, the Bylaws in effect require that report in October.

C. Paragraph 6.6 concerning the removal of a Board member is eliminated. The first sentence duplicates paragraph 5.4 REMOVAL OF A BOARD MEMBER. The Board’s power to remove a Board member is properly in ARTICLE 5, because that article defines the powers of the Board.

The second and last sentence of paragraph 6.6 is moved to paragraph 6.1.1 PRESIDENT, which describes the powers of the president, in this instance, the power to remove any officer that the president is charged with appointing.

Respectfully submitted,
Fred Ruckdeschel, Secretary

**ABOUT OUR SPEAKER FOR OCTOBER:
KATIE DELL KAUFMAN**



Katie Dell Kaufman is an award-winning encaustic, collage and assemblage artist. A member of the drawing and painting department adjunct faculty at the Corcoran

College of Art and Design for 21 years, she now facilitates workshops and classes in the greater Washington metro area. Her work has been represented by the Fraser Gallery in Washington, DC & Bethesda, MD, and the Arteco Gallery in Cumberland, MD.



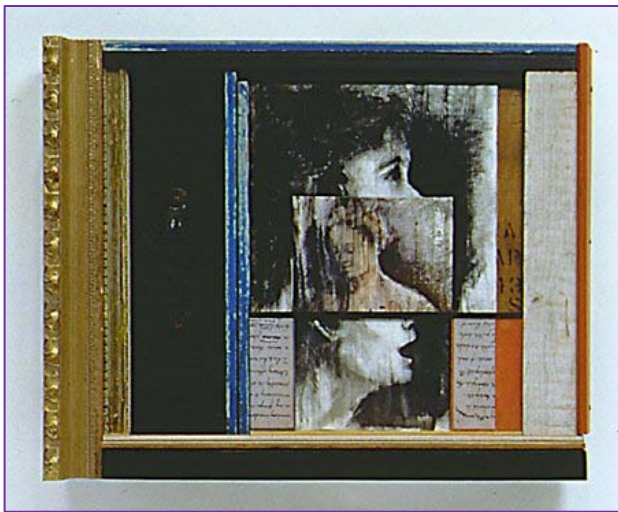
In 2010 -2011 Katie was honored with a Montgomery County Arts and Humanities Individual Artist Award for her work in encaustic assemblage. In 2008 she was commissioned to create work for an international, interdisciplinary, traveling exhibition, *Surviving History: Portraits from Vilna* from Living Imprint in London, UK. Her five biographical assemblages incorporate biographical objects provided by Lithuanian Holocaust survivors. Exhibited in Lithuania, England, and South Africa, her work now part of the permanent collection of Living Imprint, London, UK.



Katie received an MA from UMD, College Park, MD, and a BFA from Bard College in Annandale-on-Hudson, NY.



She maintains a studio at the Gateway CDC Art Center in Brentwood, MD. She lives with her family in Takoma Park, MD.



Critique by Penny Kritt

Thanks to Lee DeMulder for volunteering a painting for this month's critique column. If you would like a critique, please email a photo to me at pennykritt@aol.com. Perhaps your work will be chosen for next month! Please submit your work early so I have time to write the column for the next issue.



Lee's Pitcher
Watercolor
By Lee DeMulder

Lee found a nice cut glass pitcher around the house that became a wonderful model. The facets cut into the glass gave him an opportunity to capture all the colors of its prism effects.

Because his drawing is well executed, the viewer can tell at a glance what the object is (a pitcher) and what it is made of (glass). That puts him ahead of the game already. Adding the wooden tray underneath gives him another texture for even more interest and contrast.

But because it is obvious that this is a painting of a cut glass pitcher on a wood tray, the viewer is likely to give the painting a quick scan, recognize what it is and then move on to the next painting. The challenge is to improve the painting without having to start over.

Sometimes it is obvious what is missing, but that usually isn't the case. Our goal is to find a way to keep the viewer's eyes circling the painting,

constantly finding something new and interesting. Since nothing jumps out as a clear problem area, let's go back to using an artist's vocabulary. Then, even if nothing is obviously amiss, we can quantify what is there and discuss options about what to change.

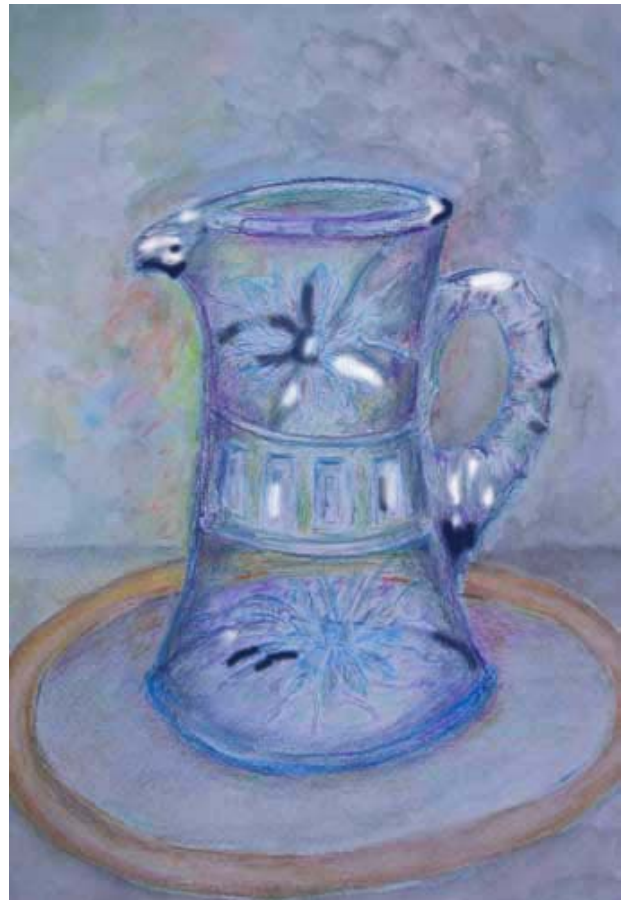
Value:

The biggest weapon in a painter's arsenal is his use (or avoidance) of value contrasts. This painting is pretty much a symphony of lights and midtones. There are no darks at all. This kind of painting will always be calm and relaxing. Adding more value contrast (lights next to darks, instead of all similar values) will provide variety to keep the viewer interested.

You'll find that your eye spends more time in the places where the darks are, so let's use them to show off where the cuts in the glass make the most interesting shapes. Note that some light shapes have been added in the same area to create even greater contrast.

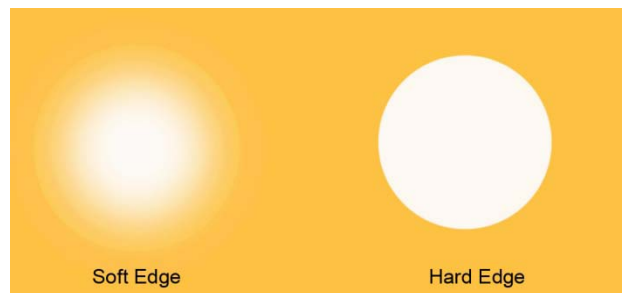
Tip:

When you put that first "dark" in, especially if it is a fairly large shape, suddenly your composition will look completely out of balance. The beginner will immediately remove that dark, but the pros know to add more elsewhere in the painting to balance it!



Tip:

When you want to show *shine* on an object, use a lighter value (of any color) next to or surrounded by a darker value. Be sure to use a soft edge so that there is a *gradual blending* of the values. The greater the difference between the values, the "brighter the shine".



Temperature:

Another element of Lee's painting is that the temperature is cool, meaning that most of his colors are in the blue/green/purple range. You'll notice this his sparing use of pink and red violet make nice counterpoints. Adding some warm colors (yellow, orange and red) make a obvious contrast without changing the values of the painting – it's still a "quiet" painting, but now there's a lot more to see in it.

Let's use more contrast in temperature and see if that helps.



By warming up the background and base of the tray, the vase become more prominent. This is a simple change that can be done by adding a wash of burnt orange. Start with a midtone wash (a fair amount of paint and some water). You can always go over it again and add more.

Now we still have those light and midtone values, but the contrast between the cool pitcher and the warmer background gives more definition.

Tip:

When you put a wash of burnt orange over a blue shape, it may turn it milk chocolate brown. That could be the perfect way to make a boring background shape a more interesting part of the painting without have it overpower other places.

Drawing issues:



In Lee's painting, the lip of the pitcher doesn't appear to be connected to the upper rim. A quick lift of paint (or a light wash of white) will join the spout to the upper edges of the pitcher. Another quick fix is that the ellipse at the bottom seems to come to a point on either side. It's easy to remedy that, as well.

Lee took on a difficult task in painting cut glass. It is very easy to get lost in the facets, especially as the light changes. All those lovely highlights and rainbow colors can magically disappear. Or just move your head a few inches, and you may find that the sparkles have rearranged themselves. Unless you relish doing a long and tedious drawing first, you can learn from Lee that taking artistic license with a few facets is all you really need.

Putting it all together:



The original painting is inserted in the upper left so you can choose which version you like best. Notice this version has some shadows added to give more value contrast. The shadow on the inside rim of the tray and to the left of the pitcher add definition. There are highlights now on the upper part of the handle and at the bottom of the pitcher to give it more depth.

If you'd like to join a group that offers weekly critiques, please contact me at the number below. All levels of artists are welcome.

For classes or private lessons, contact Penny at
301/989-1799
©Penny Kritt 2012

MEMBER ART SHOW

December 2, 2012 – December 31, 2012

Glenview Mansion Art Gallery, Rockville
Civic Center

Judge: June Linowitz will be our judge for the December Member Art Show. Ms. Linowitz is an artist, past gallery director, business person and an active member of the Washington Art Community. As a founder of ArtSeen, Inc., Ms. Linowitz represents over 300 artists selling and leasing original fine art to corporations. She will conduct a gallery walk-through on Thursday, December 6, at 7:30 PM.

Eligibility and Rules: Each member in good standing (that means you have paid your dues!) may enter two works. The maximum length of any framed side is 60 inches. A work having multiple framed parts must meet the two works per member criteria. Diptychs will count as two works. Triptychs can only be accepted if they are connected and follow the size requirement. Only original works securely framed with hanging wire are acceptable. No photographs, no reproductions, no giclées and no wet canvases are allowed. The entries must have been completed within the last two years and may not have been exhibited previously in a juried RAL Member Show. Entries not meeting the show conditions will not be accepted. Artist's signature on the Show Agreement also constitutes a commitment to donate 20% of the sale price to the City of Rockville for works sold during or as a direct result of the show. Awards given are Best in Show; first, second, third in all categories; honorable mentions at the judge's discretion.

Categories:

- oils and acrylics
- watercolors
- pastels, drawings, and hand pulled prints
- mixed media, collage, experimental, and original computer-generated art
- sculpture and ceramics.

Delivery: Wednesday, November 28, 12 noon - 2 PM and 5 – 7 PM. Register and deliver your work to the second floor Glenview Mansion Art Gallery, Rockville Civic Center.

On Thursday, November 29, please phone the pickup hotline after 2 PM, 240-314-8682.

If your number is listed then you or your designee must pick up your work on Thursday, November 29, 5-7 PM or Friday, November 30, 10 AM - Noon.

Reception: Sunday, December 2, 2012 from 1:30-3:30 PM. Presentation of awards at 2 PM. Light refreshments to follow.

Gallery Walk Through: Thursday, December 6, 2012 at 7:30 PM.

Final Pick Up: Wednesday, January 2, 2013, 10AM –12 Noon and 5-7 PM. Your work must be picked up. Please have your designee pick up your work if necessary. Any work left after Wednesday noon will not be insured. There is no storage available.

Sales: The Glenview Mansion staff will manage art sales. Artist's signature on the Show Agreement also constitutes a commitment to donate 20% of the sale price to the City of Rockville for works sold during or as a direct result of the show.

We need volunteers to help register, move, hang, type, and release entries. Please check your schedules and volunteer. It takes a lot of manpower to put this show together.

- Delivery of artworks: Wednesday, November 28, 12 noon - 2 PM and 5 – 7 PM
- Moving artwork: Thursday, November 29, 9 AM - noon
- Hanging artwork, typing program, writing ribbons: Thursday, November 29, 12 – 4 PM

- Releasing unaccepted artwork to artists: Thursday, November 29, 5 - 7 PM
- Releasing unaccepted artwork to artists: Friday, November 30, 10 - 12 noon
- Final Release to artists: Tuesday, January 2, 2013, 10 AM - 12 noon and 5 - 7 PM

Most of the time slots are two hour shifts except for Thursday when the judging and hanging are done. If you can only work two hours we can still use your help. We will need the most help those days. Please check your calendar! A sign-up sheet will be passed around at the October meeting or feel free to call or email me.

There is a \$5.00 entry fee. This fee will be waived if you have been a volunteer for RAL in any capacity, for example the May 2011 member show, telephone committee, etc. You may volunteer for the December show and that will count toward the fee waive. Please check with Marian or Liliane if you are unsure of your previous volunteer help. **Member dues (\$35) must be paid to the Membership Chair by November 1, 2012, or at our November meeting.** If you have not paid your dues and wish to enter the member show the dues will be \$40.00.

The judges' gallery walk through is at our regular meeting, Thursday, December 6, at 7:30 PM. The opening Sunday reception, December 2, 1:30 – 3:30 PM, honors the winners with an award presentation at 2:00 PM with refreshments following. The RAL show agreement will be available for download through our website in November.

The Mansion will not insure any artwork left at the mansion after the last designated pickup time, January 2, 2013. We provide two pick up times, AM and PM, if need be the member can arrange a designee to pick up their artwork or contact Marian for arrangement.

2012 RAL Members Show Agreement

I agree to the rules of the show as presented in this announcement, that my entries are my original works, and that I will not hold RAL or The Glenview Mansion or City of Rockville responsible for any possible loss or damage to my entries while on the property. I understand that all reasonable care will be taken in handling entries. I give RAL permission to photograph my artworks and publish on the website.

Please print legibly so the information is easily and accurately read. Thanks!

Printed Name _____ Date _____

Signature _____ Phone _____

Address _____

I am entering the following work(s):

Work 1:

Title _____

Medium _____ Price \$ _____ Value \$ _____

Work 2:

Title _____

Medium _____ Price \$ _____ Value \$ _____



ROCKVILLE ART LEAGUE

Attach one 2-column form to each entry:

Tape form to the back upper right corner of each work. The left side will be cut off later-after the judging-and used to compile the program.

-----CUT ALONG THIS DOTTED LINE-----

Program Info – Do NOT put any tape on this left side!

Attach tape to right side of this form and tape to back upper right corner of your work.

Work 1:

ARTIST _____

ARTIST _____

TITLE _____

TITLE _____

MEDIUM _____

MEDIUM _____

PRICE \$ _____ VALUE \$ _____

-----CUT ALONG THIS DOTTED LINE-----

Program Info - Do NOT put any tape on this left side!

Attach tape to right side of this form and tape to back upper right corner of your work.

Work 2:

ARTIST _____

ARTIST _____

TITLE _____

TITLE _____

MEDIUM _____

MEDIUM _____

PRICE \$ _____ VALUE \$ _____

CALENDAR

Show:

December 2 – December 31, 2012

Delivery of works:

Wednesday, Nov. 28, Noon – 2 PM
and 5 – 7 PM

Hotline for pickup list:

Thursday, November 29, after 2 PM
240-314-8682

Pickup of unaccepted works:

Thursday, November 29, 5 – 7 PM
Friday, November 30, 10 – Noon

Opening Reception:

Sunday, December 2, 1:30-3:30 PM
Awards at 2 PM

Light refreshments after

Judge's Gallery Walk Through

Thursday, December 6, 7:30 PM

Final Pickup:

Wednesday, January 2, 2013
10 AM – Noon and 5 – 7 PM

If you have any questions or concerns, please call at 301-590-9437 or email mackerer@comcast.net.

Marian MacKerer
1st VP and Show Coordinator

PRINT SUPPLIES FOR SALE

Laura Chassy has the following items to sell:

Etching inks:

Geranium Red: \$15.70
Raw Sepia: \$13.10
Cobalt Blue: \$13.10

Plastic frame clips: \$5 for a set of 4; 4 sets available

Black spray paint: 3 cans; \$1 each

Black metal neilson frame moulding: \$40 per frame; approximately 10" X 12"

If interested, please call Laura Chassy at: (301) 589-8058 or e-mail: LauraChassy@yahoo.com

MEMBER NEWS

Abstract Art of Jorge Bernal at Gaithersburg Arts Barn

The City of Gaithersburg is presenting the work of abstract expressionist artist Jorge L. Bernal at the Arts Barn Gallery from September 21 through November 18, 2012. Bernal's unique art will be on view to the public Monday through Friday from 10 a.m. to 5 p.m. and Saturday from 1:30 to 5:30 p.m. at 311 Kent Square Road in Gaithersburg Maryland. An artists' opening reception will be held on Tuesday, October 2, 2012 from 7 to 8:30 p.m.

Jorge Luis Bernal is an interdisciplinary artist working in mixed-media painting, collage and assemblage who has spent most of his life learning, teaching and making art. He was born in Havana, raised in Jersey City and attended art school in south Florida, receiving an MFA in architecture from Virginia Tech and a BFA from Florida International University in ceramics and art history. He spent most of his earlier career teaching college, high school and exhibiting nationally. Bernal most recently has been focusing on encaustic monotypes, for which he has received numerous awards. His work is inspired by a variety of interests: the exhilaration of color, texture, space and the interpretation of human emotions, biblical texts and spirituality.

For more information, please contact Andi Rosati at 301-258-6394 or email her at arosati@gaitersburgmd.gov. Visit the Arts Barn online at www.gaitersburgmd.gov/artsbarn

NEW MEMBER

Anja Clark is a practicing attorney. She spends her leisure time painting, swimming and traveling with her husband. Anja has been interested in art since childhood and last fall earned a certificate degree from the Corcoran School of Art.

Do you have an upcoming show? Or an event that RAL members might enjoy attending?
Please send an email to the newsletter editor! dunnz@erols.com.

DUES REMINDER

Annual dues are \$35.00 for Sept. 2012-Aug. 2013. Please pay your dues by Nov. 1, as there is a late fee of \$5.00 incurred for dues

received after November 1. Please make your check (\$35 before Nov. 1, \$40 after Nov. 1 meeting) payable to: RAL and mail to: Susan Dunnell, 11215 Dewey Road, Kensington, MD 20895.

Thank you!

CHANGE/NEW E-mail ADDRESS or street address?

Please send address or e-mail changes to Susan Dunnell at dunnz@erols.com.

ART OPPORTUNITIES

Amici Miei Restaurant Wall Space

Bernie Wilder has secured ongoing prime wall space at the Amici Mei restaurant in Potomac Woods shopping center on Seven Locks Road near Montrose Avenue. All members can have their work judged for entry and displayed for a two month period throughout the coming year. A commission will be charged, half of which will benefit Montgomery County Child Welfare. There is also a fee involved to help cover the marketing costs (advertising, grand opening). If interested, please contact Bernie directly at: bswilder@comcast.net.

GLENVIEW MANSION CONFERENCE ROOM SHOWS

You can show your artwork in Glenview Mansion for one month if you have received a 1st, 2nd, 3rd or honorable mention award in an RAL juried show. Starting in 2013, artists may have both rooms to exhibit in if a second artist doesn't sign up for the same month within two months of the show's start date; otherwise they will have one room. The receptions at Glenview mansion are 1:30-3:30 pm, on the Sunday after hanging! Preferred drop-off and

pick-up times for Glenview Shows are from 9 am to 12 noon. Note: please contact the mansion management ahead of time if you wish to modify the drop-off or pick-up times.

GLENVIEW CONFERENCE

ROOM SHOW

Wednesday delivery and hanging: 9AM–12PM
Sunday Gallery Opening: 1:30—3:30PM
Wednesday Pickup: 9AM—12PM

October 2012: Carol Saussey (2)

Hanging: October 3
Gallery Opening: October 7
Pickup: October 31

November 2012: Philip Bennett (2)

Hanging: October 31
Gallery Opening: November 4
Pickup: November 28

December 2012: RAL Winter Show

Hanging: November 28
Gallery Opening: December 2
Pickup: January 2, 2013

January 2013: Jorge Bernal

February 2013: Regina Price

March 2013: Rockville Student Show

April 2013: Susan Moses

May 2013: RAL Spring Show

June 2013: Board Members' Show

July 2013: Diane Jeang (2)

ON-GOING SHOWS

PLEASE NOTE: I will keep updating this list; just email me if you need a current list. The Twinbrook Library now has one month shows; contact Twinbrook to sign up. I have forms for signing up with new establishments. I would need to know the name of the place, contact person, what type of artwork, how many, and any restrictions. Doctors, dentists, law offices and other businesses are good places, as well as restaurants and banks. Bookstores are also excellent. We may be considering some places that would require jurying (but we would continue the tradition of the “open” shows of course).

Diane Jeang

Glenview/Open Show Coordinator (301) 871-1589 E-mail: swinedoc@yahoo.com

RAL ONGOING SHOW LIST

Bank of America - 3200 Sandy Spring Road, Olney, Maryland

10-12 paintings, Contact: (301) 232-1370

<u>Name</u>	<u>From</u>	<u>To</u>
Open	Oct. 15, 2012	April 15, 2013

Twinbrook Library - 202 Meadow Hall Drive, Rockville, Maryland

Shows are now 1 month in length. 5 medium to large paintings, Contact person: Chris Lindy (240)-777-0240, christinelundy@montgomerycountymd.gov

<u>Name</u>	<u>From</u>	<u>To</u>
Open		

Rockville Community Services Office - 30 Courthouse Square Rockville, Maryland

10-12 medium to large paintings, Contact person: Carlos Aparicio (240) 314-8303

<u>Name</u>	<u>From</u>	<u>To</u>
Valthea Fry	Aug. 15, 2012	Oct. 15, 2012
Open	Oct. 15, 2012	Apr. 15, 2013

Thomas Farm Community Center – 700 Falls Grove Drive, Rockville, Maryland

12-16 medium to large paintings, Contact person: Martha Coester (240) 314-8842

<u>Name</u>	<u>From</u>	<u>To</u>
Leita Gerson (240) 654-4736	Aug. 15, 2012	Oct. 15, 2012
Virginia Montet	Oct. 15, 2012	Dec. 15, 2012
Open	Dec. 15, 2013	Apr. 15, 2013

Marilyn J. Praisner Library – 14910 Old Columbia Road, Burtonsville, Maryland

10 small to medium or 5-6 large paintings (10 hanging chains), Contact person: Vera Ramaty (240) 773-9455

Name
Open

From
Aug. 15, 2012

To
Apr. 15, 2013

RAL BOARD OF DIRECTORS

<u>Position</u>	<u>Name</u>	<u>Phone</u>	<u>e-mail</u>
President:	Liliane Blom	301-518-5312	lilianeblom@aol.com
1st VP/Show coordinator:	Marian Mackerer	301-590-9437	mackerer@comcast.net
Treasurer	Patricia Zannie	301-962-8581	patriciacollages@yahoo.com
Secretary	Fred Ruckdeshel	301-320-3911	krisfred1963@yahoo.com
Membership	Susan Dunnell	301-949-1514	dunnz@erols.com
Publicity/mkt.	Nadia Azumi	301-538-0062	nadia@nadiasilk.com
Newsletter editor	Susan Dunnell	301-949-1514	dunnz@erols.com
Program coordinator	Jorge Bernal	301-523-4141	jorgeluisbernal@gmail.com
Telephone liaison	Irene Glaser	301-983-1699	icglaser@verizon.net
Open shows	Diane Jeang	301-871-1589	swinedoc@yahoo.com
Glenview member shows	Diane Jeang	301-871-1589	swinedoc@yahoo.com
Hospitality	Martha Campos	301-266-4670	ximenace@verizon.net
Historian	Patria Baranski	301-424-6193	
Web master	Noble	301-661-2739	noble@artofnoble.com
Founder, Hon. lifetime member	Eileen Mader	301-762-6458	

